

Updated February 4, 2015

STOP EBOLA and SAVE A LIFE



Suspect Ebola if you have:

1. **Travelled** to an Ebola affected country in West Africa in the last **3 weeks**
2. Been in **contact with someone who has travelled** to West Africa in last **3 weeks**
3. Been in **contact with a person with Ebola** in the last **3 weeks**

AND you also have:

4. Any **ONE** of the below symptoms



Photos taken from the CDC-Care Symptom Card-2014

WHAT TO DO?

If you have these signs:

1. Call The Ministry of Health;
 - a) National International Health Regulation Focal Point: 876-822-2222
 - b) Emergency, Disaster Management and Special Services : 876-317-8887
 - c) MOH National Emergency Operations Centre:
888-663-5683, 876-922-8619,
876-922-8622
2. Go to the nearest hospital and follow the instructions of the Ministry of Health
3. Try to vomit or stool in a bathroom in a toilet and add 1/4cup of bleach before flushing
4. **Wash your hands** after with soap and water, then wipe hands with alcohol
5. **Do not touch** vomit, stool, blood
6. **Cover vomit, stool or blood with bleach** and leave for 10 minutes.
7. Cover hand with gloves or plastic bag and **place soiled garbage** in a new garbage bag
8. **Remove clothes** and place in garbage bag
9. **Close bag and wipe outside** with bleach
10. The MOH will instruct on disposal of waste.
11. **Shower and change** into clean clothes
12. **Stay away from other persons**
13. Try to drink as much water/fluid as possible
14. **Remain calm and await instructions from the MOH**

University Hospital of the West Indies

Tel: 876-927-1620-9- Accident and Emergency Department

Ebola Case Counts

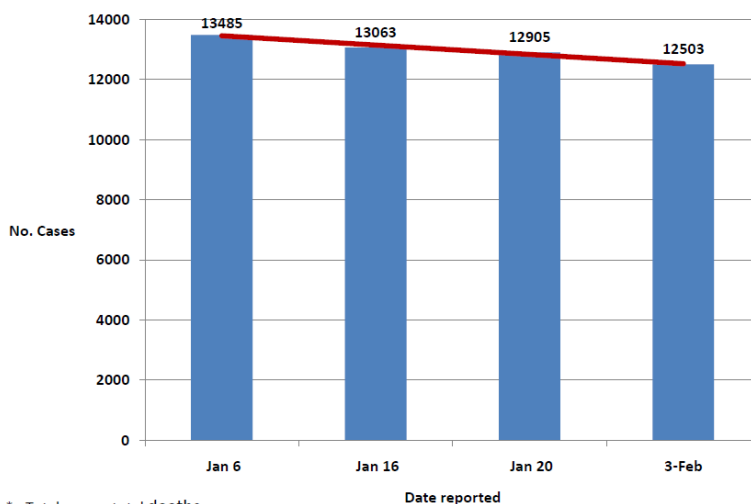
Updated February 4, 2015

Country	Total Cases (as of Feb 3)	Total Cases (as of Jan 20)	Total Cases (as of Jan 16)	Total Cases (as of Jan 6)	Laboratory Confirmed Cases (as of Feb 3)	Total Deaths (as of Feb 3)	Total Deaths (as of Jan 20)	Total Deaths (as of Jan 16)	Total Deaths (as of Jan 6)
Guinea	2975	2871	2825	2769	2539	1944	1876	1829	1767
Liberia	8729	8478	8362	8115	3135	3739	3605	3556	3471
Sierra Leone	10740	10340	10186	9772	7903	3276	3145	3083	2915
Total	22444	21689	21373	20656	13577	8959	8626	8468	8153

CDC Ebola Case Counts

Number of active* Ebola cases
Guinea, Liberia and Sierra Leone

January 6 to February 4, 2015



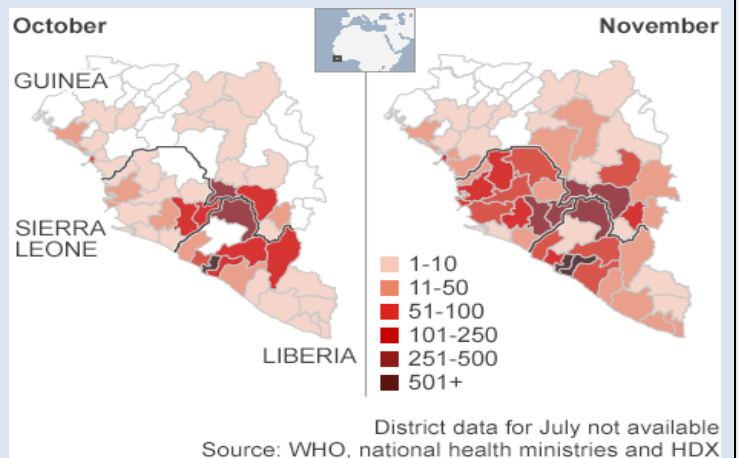
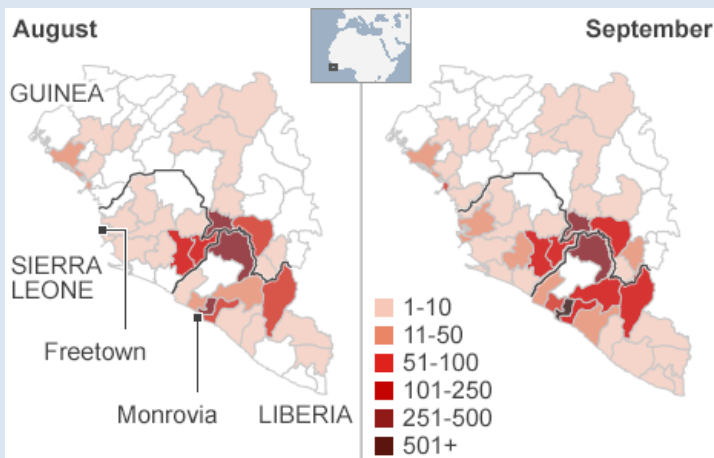
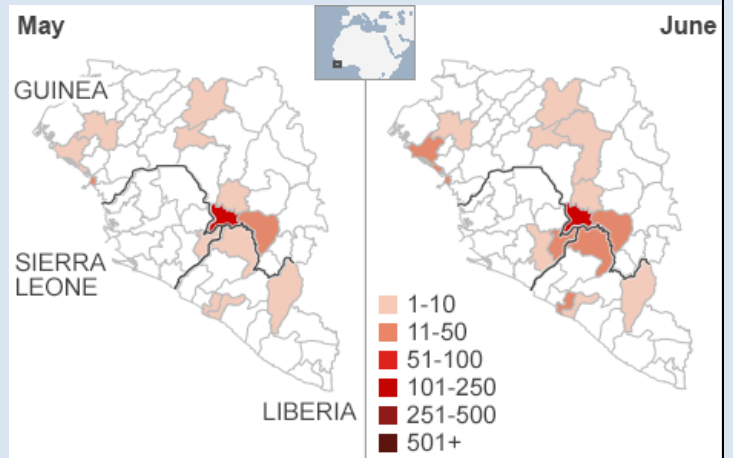
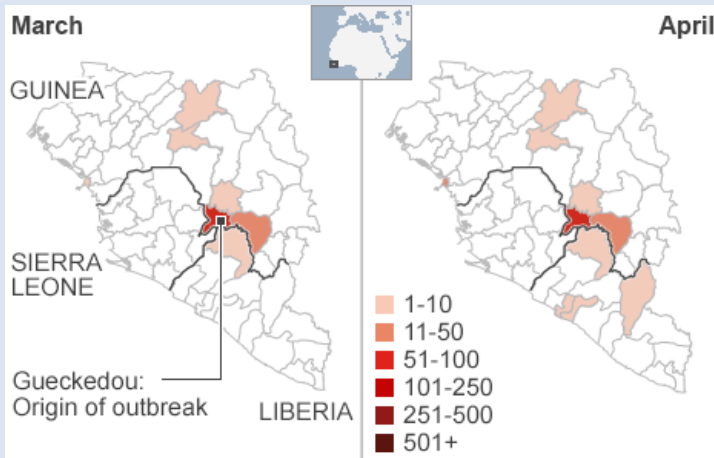
*= Total cases - total deaths

Adapted from CDC Ebola Case Counts

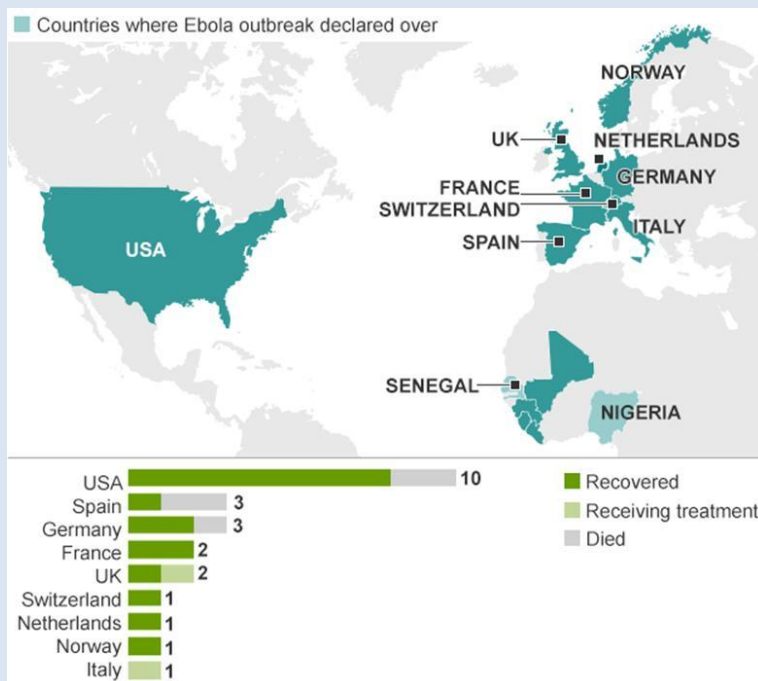
<http://www.cdc.gov/vhf/ebola/outbreaks/2014-west-africa/case-counts.html>


How the virus spread: Ebola death toll

<http://www.bbc.com/news/world-africa-28755033>



District data for July not available
Source: WHO, national health ministries and HDX





UHWI Ebola Preparedness & Response Update

The University Hospital of the West Indies (UHWI) would like to inform its employees and clients that it has and continues to be actively engaged at all levels in ensuring that all the necessary procedures are implemented for the prevention and control of all infectious diseases. The UHWI follows the guidelines of the Jamaica Ministry of Health, the World Health Organization (WHO), the Pan American Health Organization (PAHO) and the Caribbean Public Health Agency (CARPHA).

The UHWI Ebola Preparedness Committee (UHWI EPC) was established in response to the current outbreak in West Africa.

Below is a summary of key steps which have been implemented by the UHWI EPC to enable the early detection and prevention the spread of Ebola at the UHWI and in Jamaica.

❖ Patient Triage

Patient screening will occur at the designated Triage location adjacent to the Casualty Department.

1. All patients will first be screened for fever and diarrhea (with or without) vomiting *
- AND
2. A history of travel within the 3 weeks of symptom onset.
 - a. Travel to West Africa or other countries where Ebola virus disease transmission has been reported by WHO
- or
- b. History of travel contact with (a) or patient presenting with (1)

*Additional symptoms screened for will include: headache, joint and muscle aches, weakness, fatigue, stomach pain, lack of appetite, and bleeding.

❖ **Suspect or Probable Patients –Interim Isolation**

Suspect patients will be transferred to a designated infectious disease isolation holding unit using standard, contact and droplet precautions for further assessment.

This isolation unit has been constructed by the UHWI and will serve to contain highly infectious diseases such as Ebola until patients are transferred to the designated MOH Ebola Treatment Centre.

The UHWI would like to thank Mr. L Williams and his team for their hard work in enabling the construction of the UHWI ID isolation unit.



UHWI Isolation Unit Construction Team

❖ **Education**



Professor C Christie-Samuels (Head, Ebola Education Sub-Committee)

**Education is Key !
Continued Training for 2015**

Understanding how Ebola is spread, surveillance and the use of recommended infection control guidelines has been proven to interrupt the spread of Ebola. The Education committee is actively involved in increasing the awareness of UHWI employees regarding Ebola through scheduled workshops/meetings. Twenty (28) such workshops/meetings have occurred to date with an estimated attendance of over 3,300 persons. In addition two DM Microbiology Residents had the opportunity to attend the MOH/PAHO Cuban Ebola Preparedness Workshop (December 1 to 3rd, 2014)

Two types of Training Workshops are offered.

A) General Education Training.

And

B) Specialized Training for Front Line Responders with Competency Assessment.

Training resumes in January 2015

For Information on Education and Training Appointments Contact:

Mrs. Andrea Cross, UHWI EPC Secretary, Telephone: 876-822-0213, Email: andrea.cross@uhwi.gov.jm
24 hour contact number: 1-876-927-1620-9 (UHWI Ebola Preparedness Committee)

Who are Health Care Workers ?

The Health Care Worker is defined by the WHO as:

“all people engaged in the promotion, protection or improvement of the health of the population”

Reference: WHO. Dal Poz MR, Kinfu Y, Dräger S and Kunjumen T. Counting health workers: definitions, data, methods and global results. Department of Human Resources for Health. WHO. 2007

Training of Marksman UHWI Security



The hospital security department plays an important role in emergency and control access to the UHWI, and controlling visitors' movements. They are positioned at key locations throughout the UHWI and if necessary can direct patients to specific areas.

Training in the use of Personal Protective Equipment for Front Line Responders



Training of Accident and Emergency Doctors and Nurses



FMS - Annual Research Conference Ebola Awareness Booth

❖ Infection Control Practices

The UHWI Infection Control Sub-Committee has the responsibility of working with the UHWI Infection Control Committee in the monitoring of infection control procedures for Ebola at the UHWI. This includes: 1. Standard Precautions, 2. Contact Precautions and 3. Droplet Precautions

Good Hand Hygiene is the foundation of infection control and is important in the prevention and control of Ebola.

Hand Washing Steps



http://thelovingmum.sg/wp-content/uploads/2012/10/8_steps_hands.jpg

❖ **Communications**

The UHWI Communications Sub-Committee has the responsibility for the implementation and vetting of communications within the UHWI. All external, media and internal communications are under the jurisdiction of the office of the CEO and the Medical Chief of Staff. All patient matters will be handled with strict confidentiality.

❖ **Staffing**

The UHWI will limit the number of health care Triage workers for Ebola surveillance and management. These workers must be medically cleared and display competence in the use of appropriate Viral Hemorrhagic Fever (Ebola) infection control procedures. All Front Line at risk health care workers will be provided with the appropriate category WHO Personal Protective Equipment (PPE) and infection control supplies. Employees engaged in care will be volunteer employees and will not be coerced to care for high risk infectious patients with illness such as Ebola which has a fatality rate of 70% in the current outbreak. .

❖ **Security**

Designated security checkpoints will be manned by trained security personnel.

❖ **Transfer of Patient to designated Ministry of Health Facility**

The patient will be transferred to the designated MOH facility at the National Chest Hospital under the supervision of the MOH for long term care. Patients will be transported for using WHO guidelines under approval of the Medical Chief of Staff or designate.

❖ **Reporting of Suspect or Probable Cases**

All suspect or probable cases will be reported immediately to the MOH under confidentiality using the designated UHWI Ebola Preparedness and Response Communication Algorithm. This Algorithm will be made available to relevant persons.

❖ **Interim Patient Management**

Patient management will be at the designated MOH Ebola Treatment Centre. Only one blood sample will be taken by a MOH trained health care worker and transported by the MOH to the Public Health Agency of Canada for confirmatory investigation. Health care will concentrate on nutrition, fluid balance, oxygen, antibiotics and blood and blood products from universal donors with restricted movement of patients.

Implementation of an Infectious Disease Ward at the UHWI

The UHWI is in the process or renovating a permanent infectious disease ward for all infectious diseases. This will have the capacity to manage four patients (Biosafety Level 3 and 4 pathogens)

❖ **Patient Contact Tracing**

The initial list of contacts will be identified by the UHWI Public Health Team (Surveillance) Team using the national guidelines. Follow up contact tracing will be by the MOH.

❖ **Management of waste disposal**

Waste disposal will be managed by trained UHWI Environmental and Maintenance using WHO guidelines in collaboration with the MOH.

❖ **Management of Deceased**

All deceased will be managed on location using WHO guidelines and transported to the MOH designated morgue by the MOH.

❖ **Patient and Staff Counselling**

Designated counseling services for UHWI patients and caretakers will be available by trained UHWI counselors.

❖ **Monitoring and Evaluation**

The UHWI EPC Monitoring and Evaluation sub-committee will audit and monitor all activities of the Preparedness and Response Plan and its interactions with the National Response Team. Scheduled feedback to the committee will allow for adjustments and improvements for staff and patient management. Guidelines are updated, as new information becomes available.

UPDATES/PERIODICALS

1) **UHWI SITUATION UPDATES:**

As of January 20, 2014, the number of Ebola suspect cases at the UHWI = 0

2) **NATIONAL EBOLA UPDATES:**

<http://jis.gov.im/features/alert-ebola-information/>

3) **WHO SITUATION UPDATES:**

http://apps.who.int/iris/bitstream/10665/137424/1/roadmapsitrepre_31Oct2014_eng.pdf?ua=1

UPDATES/PERIODICALS

4) **INFORMATION FOR MEDICAL STAFF:**

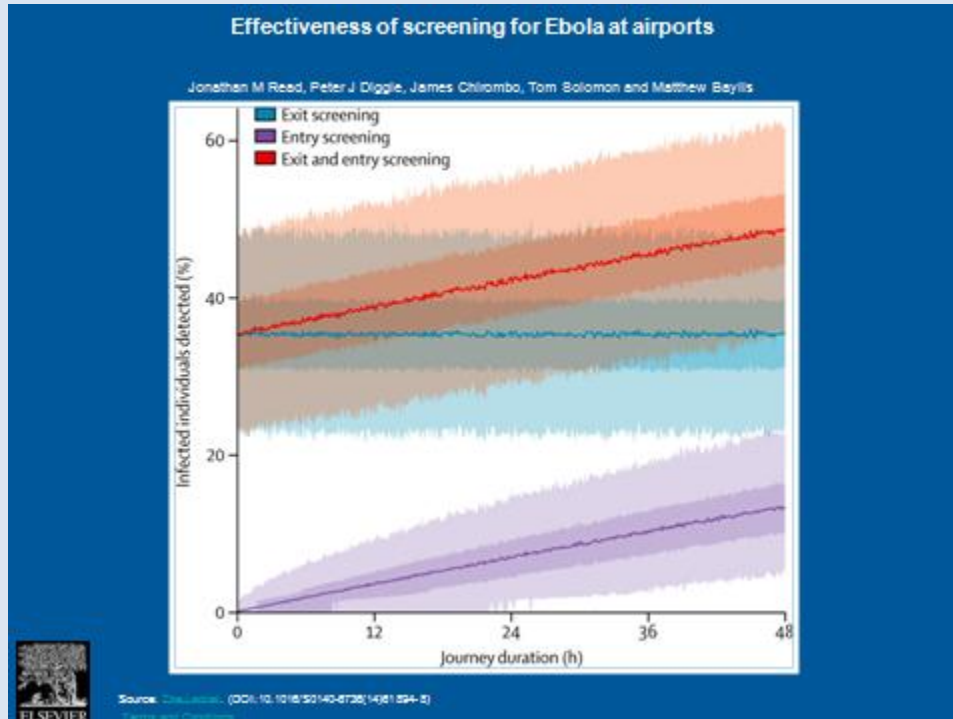
- [Ebola and Ebola Preparedness at the UHWI, decreasing our risk, PPT slide set](#)

Interim Infection Prevention and Control Guidance:

- http://apps.who.int/iris/bitstream/10665/130596/1/WHO_HIS_SDS_2014.4_eng.pdf?ua=1&ua1

5) **THE LANCET RESOURCE CENTRE:**

- [Ebola Resource Centre](#)



[http://www.thelancet.com/journals/lancet/article/PIIS0140-6736\(14\)61894-8/fulltext](http://www.thelancet.com/journals/lancet/article/PIIS0140-6736(14)61894-8/fulltext)

6) **Clinical Tool kit for Preparedness & Response- Resources for Healthcare Professionals.**

- [Ebola Virus: Tools and Information](#)

7) **PERSONAL PROTECTIVE EQUIPMENT VIDEO- North Carolina Division of Public Health**

- [20-minute video](#)

(Demonstrating PPE use for healthcare personnel who will provide care to suspected or confirmed patients with Ebola)

8) **INTERNATIONAL EBOLA UPDATES:**

- <http://www.phac-aspc.gc.ca/id-mi/vhf-fvh/ebola-symptoms-symptomes-eng.php>
- http://www.paho.org/hq/index.php?option=com_topics&view=article&id=426&Itemid=410&lang=en
- http://carpha.org/Portals/0/articles/documents/FAQ%20What%20is%20Ebola_FINAL.pdf

9) **WHO UPDATES – October 31, 2014**

- WHO PPE technical specifications
http://apps.who.int/iris/bitstream/10665/137411/1/WHO_EVD_Guidance_SpecPPE_14.1_eng.pdf?ua=1

- WHO Personal Protective Equipment in the Context of Filovirus Disease Outbreak Response Rapid advice guideline
http://apps.who.int/iris/bitstream/10665/137410/1/WHO_EVD_Guidance_PPE_14.1_eng.pdf?ua=1&ua=1

10) CDC UPDATES:

- a. CDC Guidance on Personal Protective Equipment. Updated October 20, 2014.

<http://www.cdc.gov/vhf/ebola/hcp/procedures-for-ppe.html>

- b. What Obstetrician–Gynecologists Should Know About Ebola -A Perspective From the Centers for Disease Control and Prevention

file:///C:/Documents%20and%20Settings/10015335/My%20Documents/Downloads/What_Obstetrician_Gynecologists_Should_Know_About.21.pdf

- c. CDC Interim Guidance for Monitoring and Movement of Persons with Potential Ebola virus

[*Interim Guidance for Emergency Medical Services \(EMS\) Systems for Management of Patients with Known or Suspected Ebola Virus Disease in the United States*](#)

[Recommendations for Safely Performing Acute Hemodialysis in Patients with Ebola Virus Disease in U.S. Hospitals](#)

[Safely and Effectively Managing the Infectious Ebola Patient](#)

- d. CDC Guidance for Emergency Medical Services

[Interim CDC U.S. A Guidance for Monitoring and Movement of Persons with Potential Ebola Virus Exposure](#)

- e. CDC Fact Sheet

[Monitoring Symptoms and Controlling Movement to Stop Spread of Ebola](#)

- f. CDC Updated Epidemiologic Risk Factors

[CDC updated Epidemiologic Risk Factors to Consider when Evaluating a Person for Exposure to Ebola Virus and the Ebola Virus Disease case definition.](#)

11) ALL STUDENTS – COMING SOON!

INFECTION CONTROL AND EBOLA AWARENESS COMPETITION



Dr. S Jackson and Professor E. Barton
Co-Chairs
UHWI Ebola Preparedness & Response Committee