



**IEDRO's Cooperative Approach to Data Rescue for the
Development of Worldwide Environmental Databases**

WHAT IS DATA RESCUE?

“Basis for meaningful research...”

...that hopefully leads to meaningful applications!

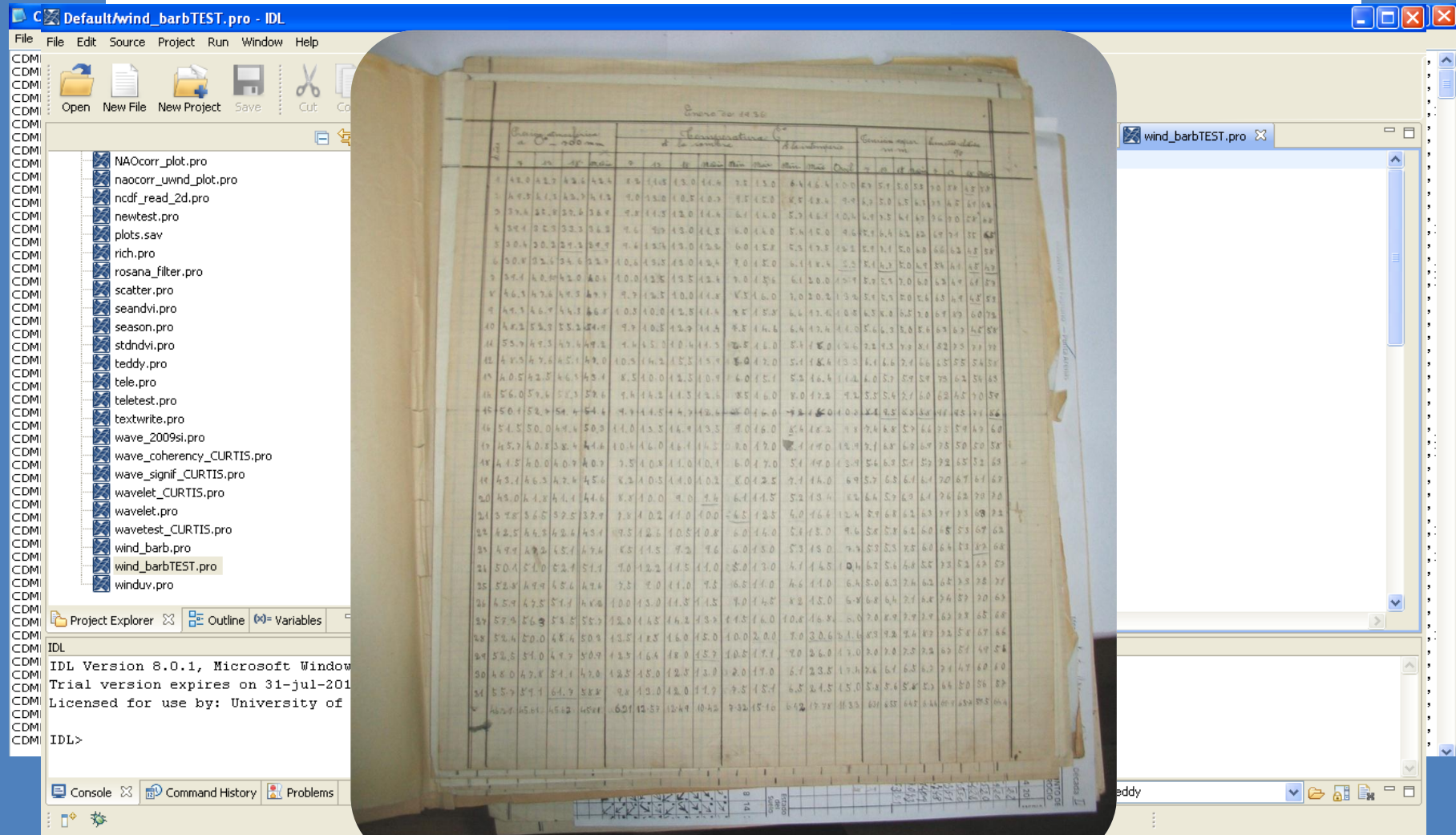
- **human health: dengue, malaria, cholera**
- **life saving agricultural statistics: subsistence farming, floods / droughts**
- **severe event statistics: devastating floods, flood forecasting**
- **climate change trends / statistics**

INGESTION OF DATA INTO

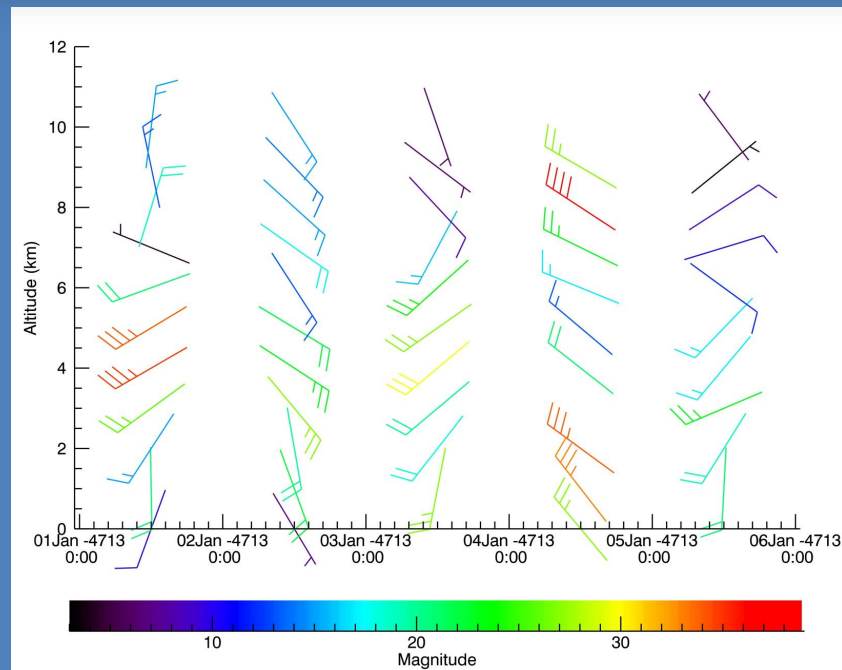
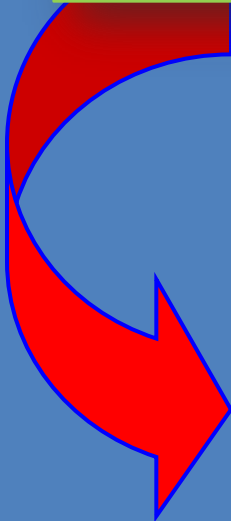
GRAPH DBALC OPTIMIZED DATA

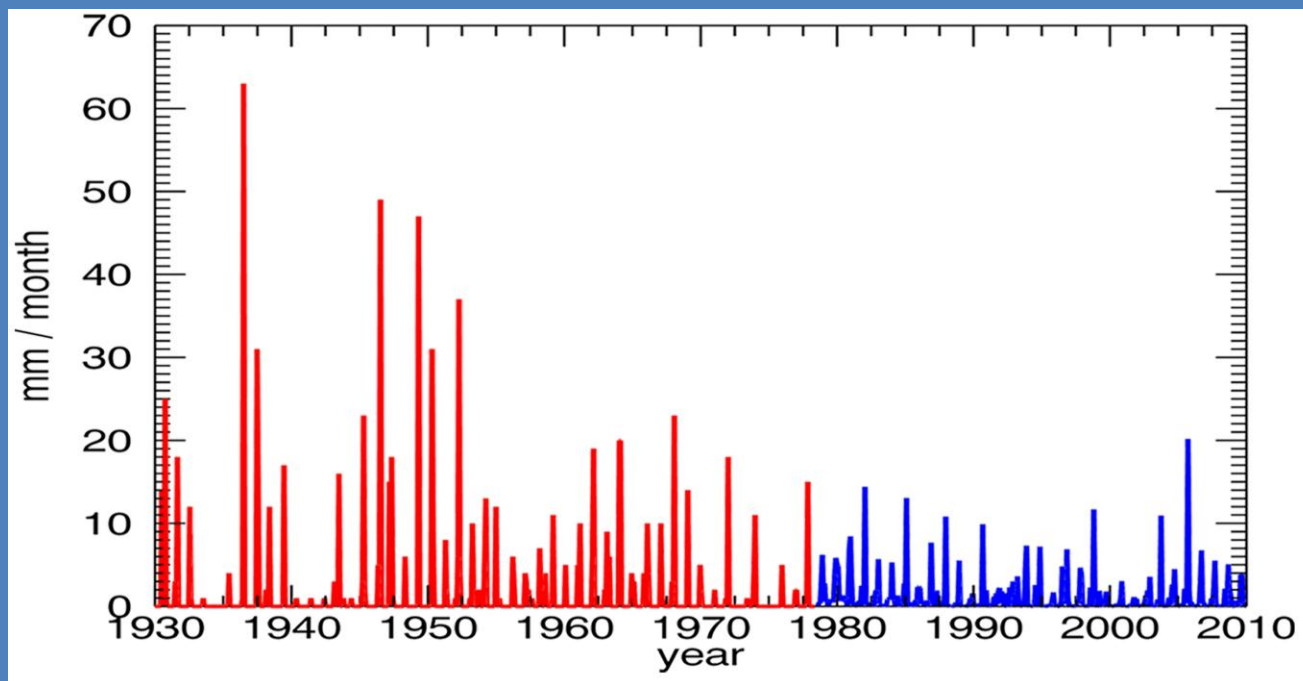
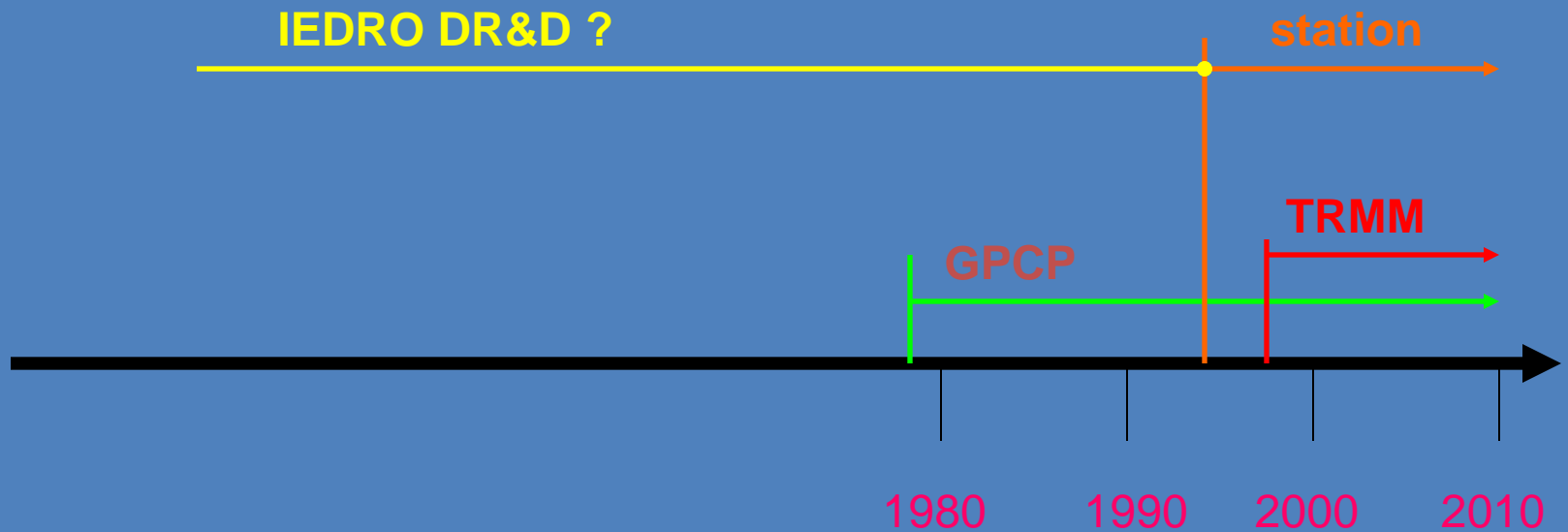
COMPUTATIONAL SOFTWARE

ORIGINAL RAW PIBAL DATA



...a picture is worth a thousand “numbers.”



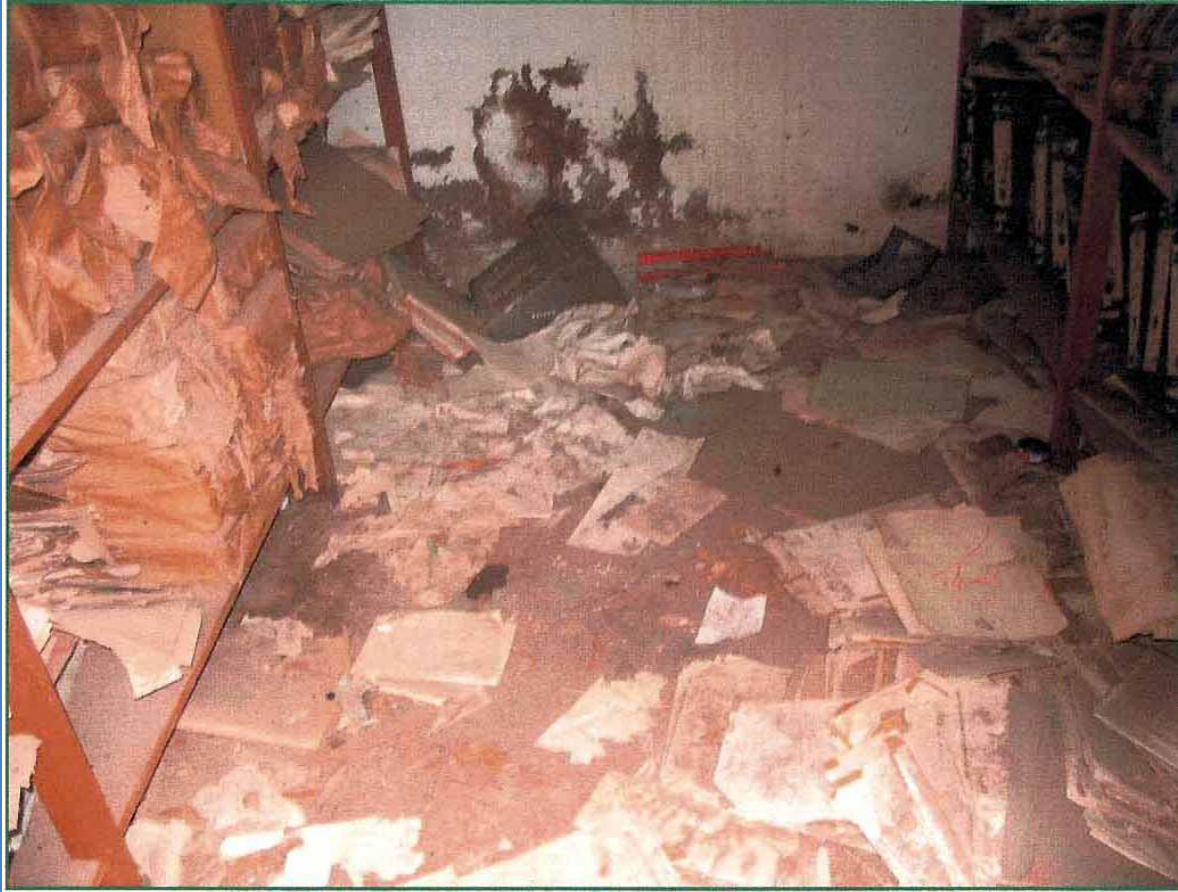


The magnitude of any Data Rescue effort depends on the condition or status of record archival.



some may be difficult to access and use

Some countries have very poor storage conditions.



With access and use almost impossible or even useless.

Unfortunately, paper, microfiche, microfilm and magnetic tape records are all deteriorating storage media and are in danger of being lost forever over time.

Cooperative Approach to DR&D

- The IEDRO approach to DR & D is designed to work in **cooperation** with the participating countries.
- The four phase approach to the program is as follows:
 - **Phase 1 – Pre-processing / Inventory**

Cooperative Approach to DR&D

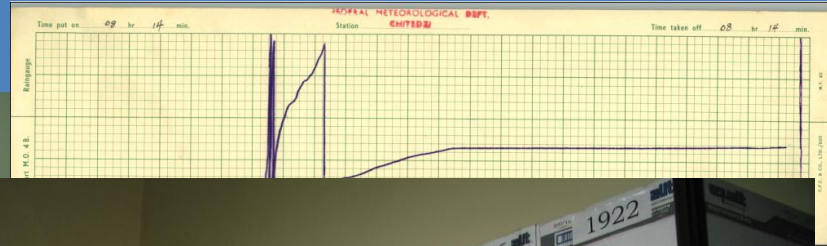
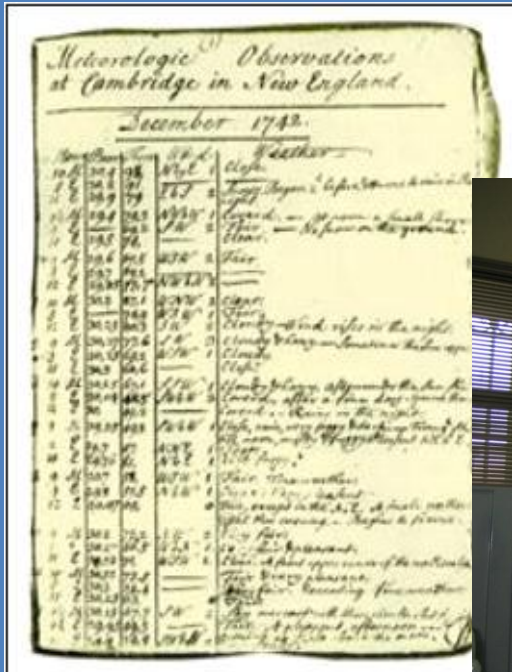
- Final products include:
 - Long lasting and easily retrievable electronic images
 - Reduction in valuable storage space
 - Digitized databases
 - Useful software for use with electronic images and digitized data

How do we locate and prioritize potential records for rescue?

- Actually look at **ALL** of the records in the country's possession.
- Determine the Periods Of Records (**PORs**) available for each record set.
- Evaluate the status / conditions of each data set media.
- Examine the PORs already digitized and archived in the World Data Center databases **and** within the country.
- Determine what the major priorities are for the country.
- Consider the most urgent needs of public, academic and research communities.
- Only work on **ONE** data set at a time or per team.

Phase 1 - Pre-processing / Inventory Procedures

- Locate, review, identify projects and their scopes (volume).
- Prioritize all records to be imaged.
- Set-up a dedicated work area with little or no



H	Time	K	P	Winds, &c.	Remarks
1	10.0	10.0	10.0	10.0	10.0
2	10.1	10.1	10.1	10.1	10.1
3	10.2	10.2	10.2	10.2	10.2
4	10.3	10.3	10.3	10.3	10.3
5	10.4	10.4	10.4	10.4	10.4
6	10.5	10.5	10.5	10.5	10.5
7	10.6	10.6	10.6	10.6	10.6
8	10.7	10.7	10.7	10.7	10.7
9	10.8	10.8	10.8	10.8	10.8
10	10.9	10.9	10.9	10.9	10.9
11	11.0	11.0	11.0	11.0	11.0
12	11.1	11.1	11.1	11.1	11.1

- Find & image samples or forms which they changed formats throughout POR.

DominicanRepublic_PrepLogSheets - Microsoft Excel

Home Insert Page Layout Formulas Data Review View Developer Add-Ins

Paste Font Alignment Number Styles Cells Editing

K460 fx 2

	A	B	C	D	E	F	G	H	I	J	K	L	M	N	O	P	Q	R	S	T	U	V						
457	1944 / Month													Annual														
458	Day	Jan	Feb	Mar	Apr	May	Jun	Jul	Aug	Sep	Oct	Nov	Dec	# Pgs	21	2	2	2	2	2	2	24						
459		1	2	2	2	2	2	2	2	2	2	2	2	24	22	2	2	2	2	2	2	24						
460		2	2	2	2	2	2	2	2	2	2	2	2	24	23	2	2	2	2	2	2	24						
461		3	2	2	2	2	2	2	2	2	2	2	2	24	24	2	2	2	2	2	2	24						
462		4	2	2	2	2	2	2	2	2	2	2	2	24	25	2	2	2	2	2	2	24						
463		5	2	2	2	2	2	2	2	2	2	2	2	24	26	2	2	2	2	2	2	24						
464		6	2	2	2	2	2	2	2	2	2	2	2	24	27	2	2	2	2	2	2	24						
465		7	2	2	2	2	2	2	2	2	2	2	2	24	28	2	2	2	2	2	2	24						
466		8	2	2	2	2	2	2	2	2	2	2	2	24	29	2	2	2	2	2	2	22						
467		9	2	2	2	2	2	2	2	2	2	2	2	24	30	2	2	2	2	2	2	22						
468		10	2	2	2	2	2	2	2	2	2	2	2	24	31	2	2	2	2	2	2	14						
469		11	2	2	2	2	2	2	2	2	2	2	2	24	Month	62	56	62	60	62	60	730						
470		12	2	2	2	2	2	2	2	2	2	2	2	24														
471		13	2	2	2	2	2	2	2	2	2	2	2	24	1945 / Month													Annual
472		14	2	2	2	2	2	2	2	2	2	2	2	24	Day	Jan	Feb	Mar	Apr	May	Jun	Jul	Aug	Sep	Oct	Nov	Dec	# Pgs
473		15	2	2	2	2	2	2	2	2	2	2	2	24	1	1	1	1	1	1	1	1	1	1	1	1	12	
474		16	2	2	2	2	2	2	2	2	2	2	2	24	2	1	1	1	1	1	1	1	1	1	1	1	12	
475		17	2	2	2	2	2	2	2	2	2	2	2	24	3	1	1	1	1	1	1	1	1	1	1	1	12	
476		18	2	2	2	2	2	2	2	2	2	2	2	24	4	1	1	1	1	1	1	1	1	1	1	1	12	
477		19	2	2	2	2	2	2	2	2	2	2	2	24	5	1	1	1	1	1	1	1	1	1	1	1	12	
478		20	2	2	2	2	2	2	2	2	2	2	2	24	6	1	1	1	1	1	1	1	1	1	1	1	12	
479		21	2	2	2	2	2	2	2	2	2	2	2	24	7	1	1	1	1	1	1	1	1	1	1	1	12	
480		22	2	2	2	2	2	2	2	2	2	2	2	24	8	1	1	1	1	1	1	1	1	1	1	1	12	

Ready Average: 2 Count: 18 Sum: 36 100%

[illegible]

Phase 2 - Imaging Phase

- IEDRO will buy, set-up and test computer, software and cameras.
- Train personnel on:
 - How to use of the Microsoft Excel spreadsheet program, **if necessary**.
 - Operational procedures for the computer and camera.
 - Downloading of images to the PC.
 - Procedures for imaging, copying and QC of the images.

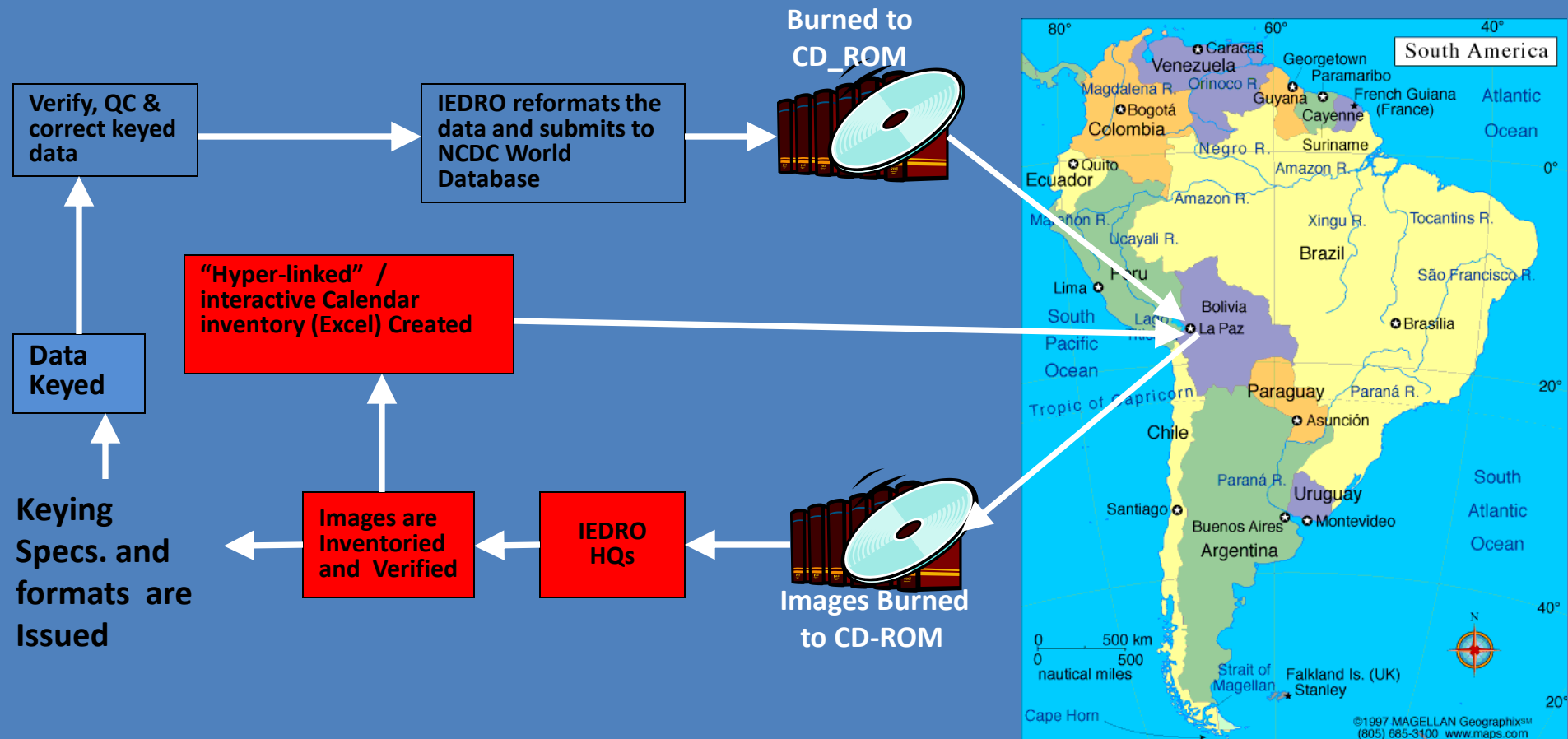


Phase 2 - Imaging Phase (Continued)

- The record imaging operations process by country personnel will begin and continue until completed.
- Country personnel must visually **QC** all the images (or an adequate representative sample) **BEFORE** copying to storage media.
- Images and “.xls” files are periodically copied to CDs, thumb drive or other storage media and sent to IEDRO HQs.
- The next graphic display depicts what happens with imaged records.

Bolivian Image/Keying Data Rescue Project

Image and Data Flow

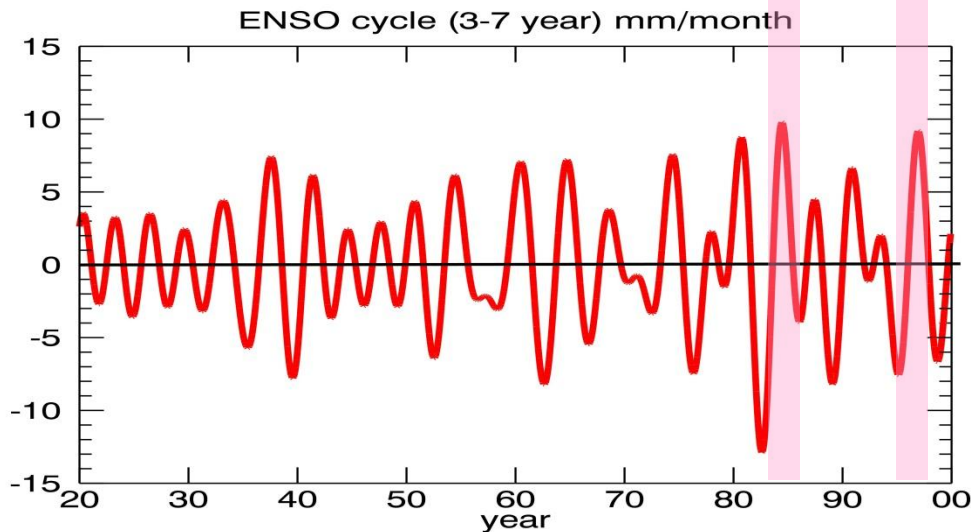
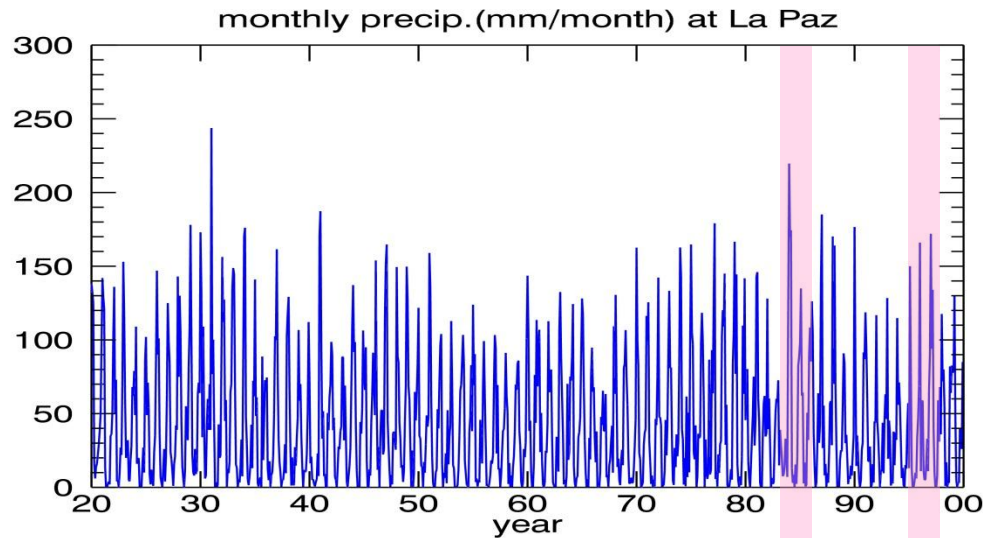


Climate Applications

How does El Nino affect rainfall in La Paz?

**1920 – 1999
Monthly Rainfall
at La Paz**

**3-7 Year Filtered
Rainfall Time
Series
(El Nino Cycle)**





INTERNATIONAL ENVIRONMENTAL DATA RESCUE ORGANIZATION

**This Concludes The Presentation
Any Questions or Comments?**