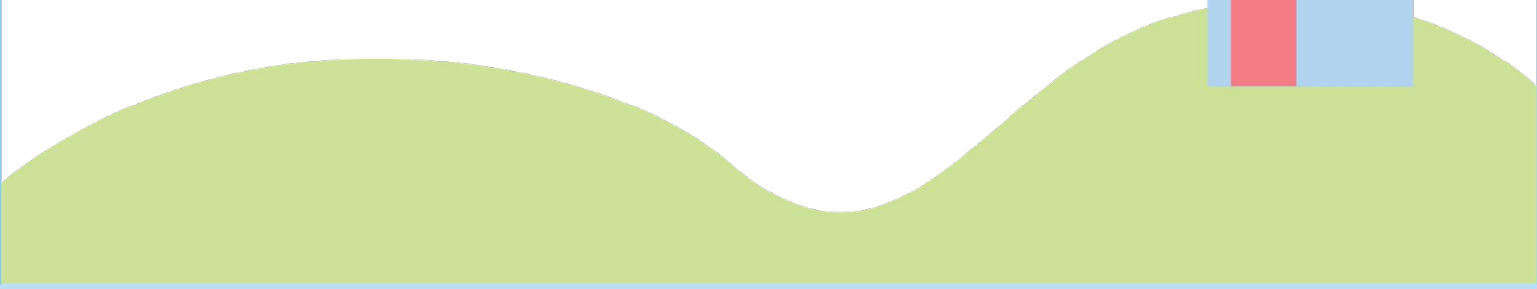
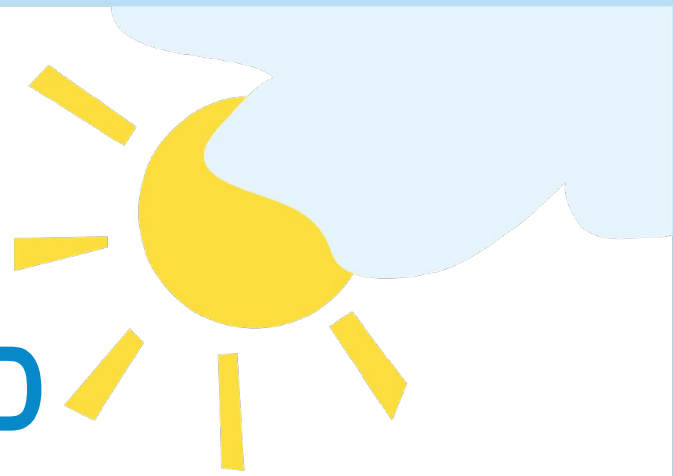
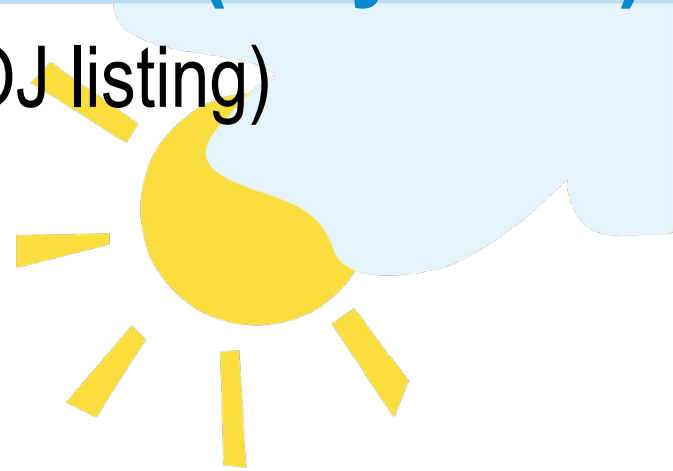


**THE HEALTH AND
WELL-BEING
OF JAMAICA'S YOUNG ONES**



The Children's Homes (Physical)

- 26 goods surveyed (PIOJ listing)
- Television 94.8%
- Cable 34.2%
- Computer 38.1%
- Internet 24.0%
- Water Tank 33.8%
- Air Conditioning 4.7%
- Generator 2.4%

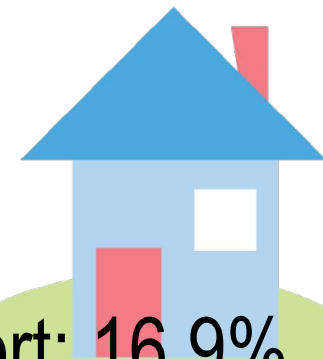
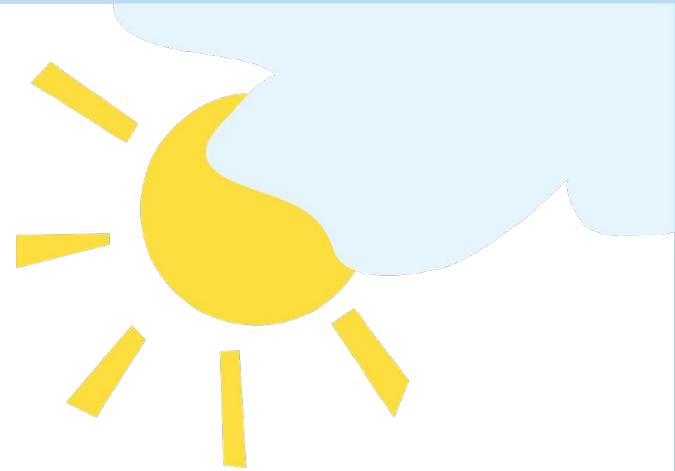


The Children's Homes(Economic)

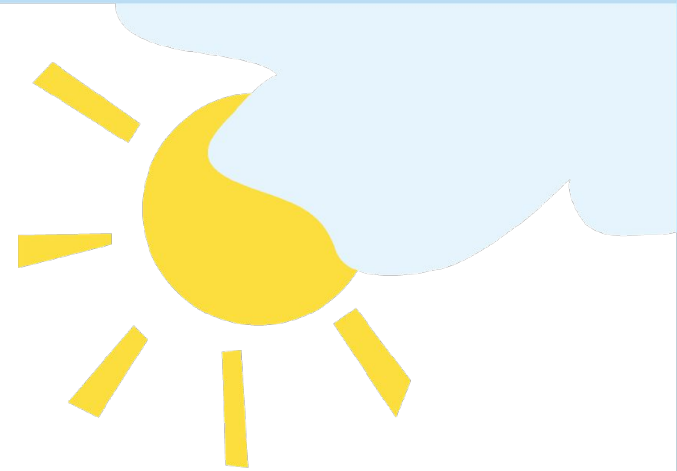
- Major wage earner
 - Mothers 20.8
 - Fathers 57.1
 - M. Grandmother 22.1

- Social Support 35.6

PATH single largest form of support: 16.9%

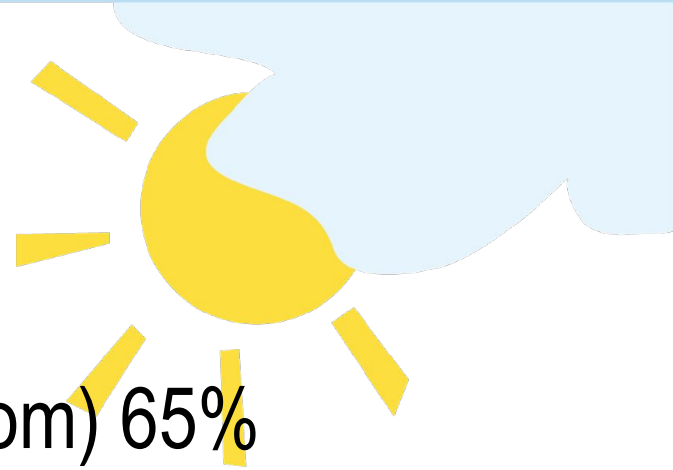


FAMILY INTERACTIONS



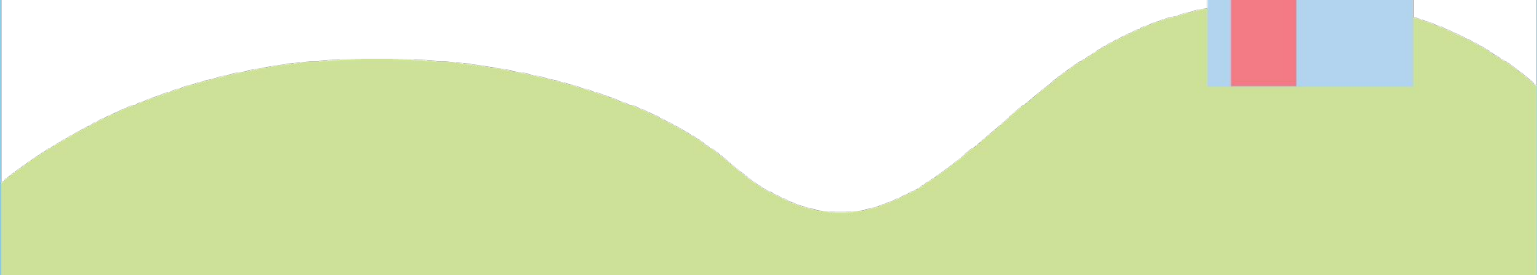
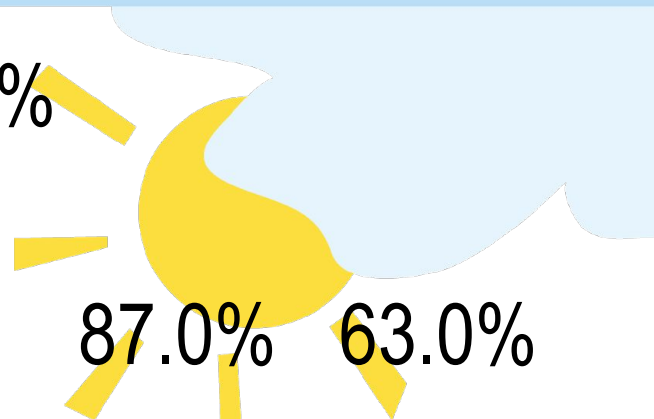
Parent Relationships

- Marital Status at Birth
 - Married 14%
 - Living with partner 51%
- Previous pregnancy (mom) 65%
- 34.1% of mothers had 2 or more previous partners for whom they had children



Father Relationships: 1-4 Years

- Relationship at birth 91%
- Current Partner 87.3% 87.0% 63.0%
- Father Figure 90.9% 88.5% 72.9%
- 45% living with child at 4 years





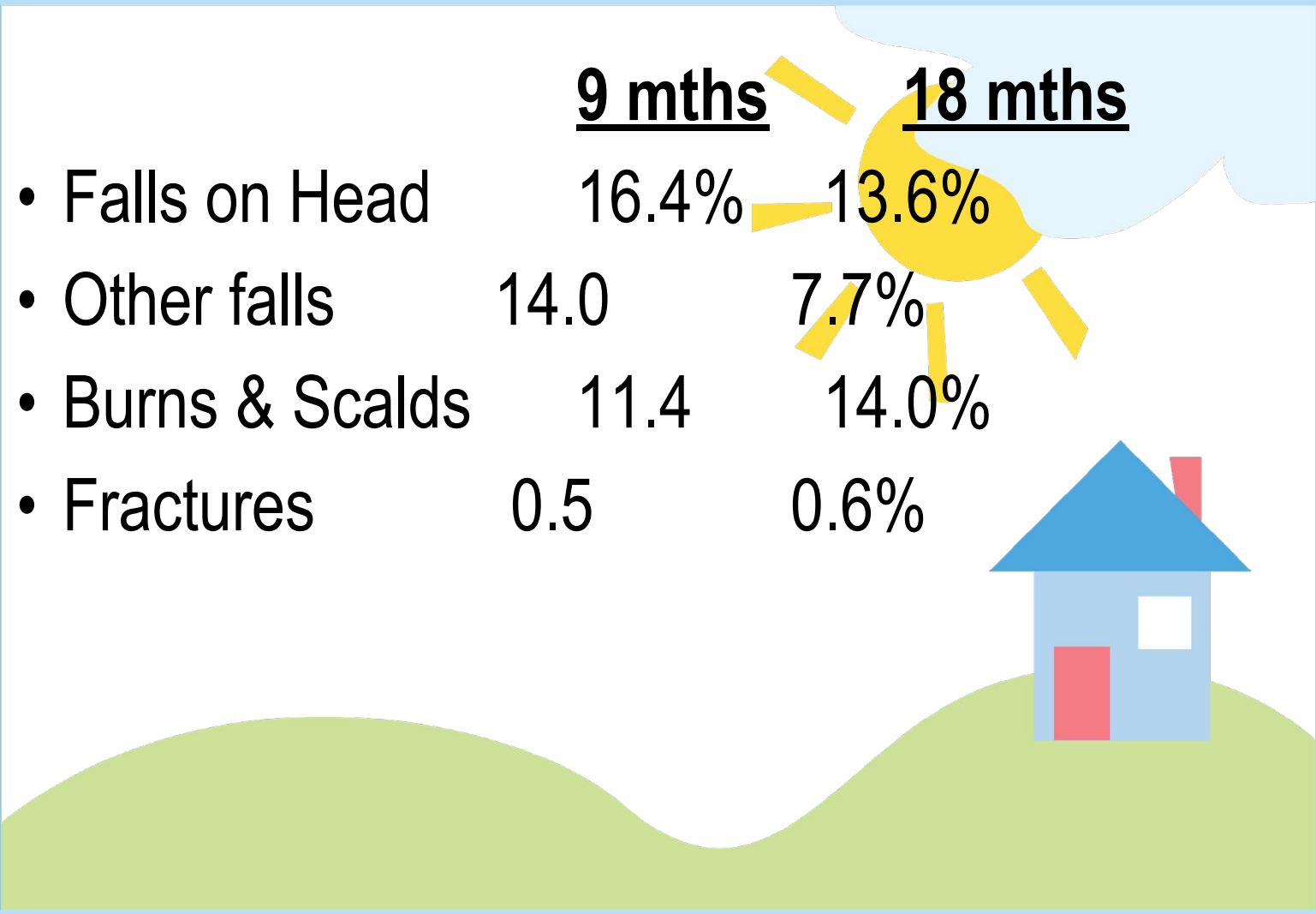
CHILDREN'S PHYSICAL HEALTH

Children's General Health

- Parents consistently report children are healthy 99%
- Immunisation source at 18 mths:
 - Public Clinic 94.2%
 - GP 0.7%
 - Paediatrician 3.8%
 - Hospital 0.9%

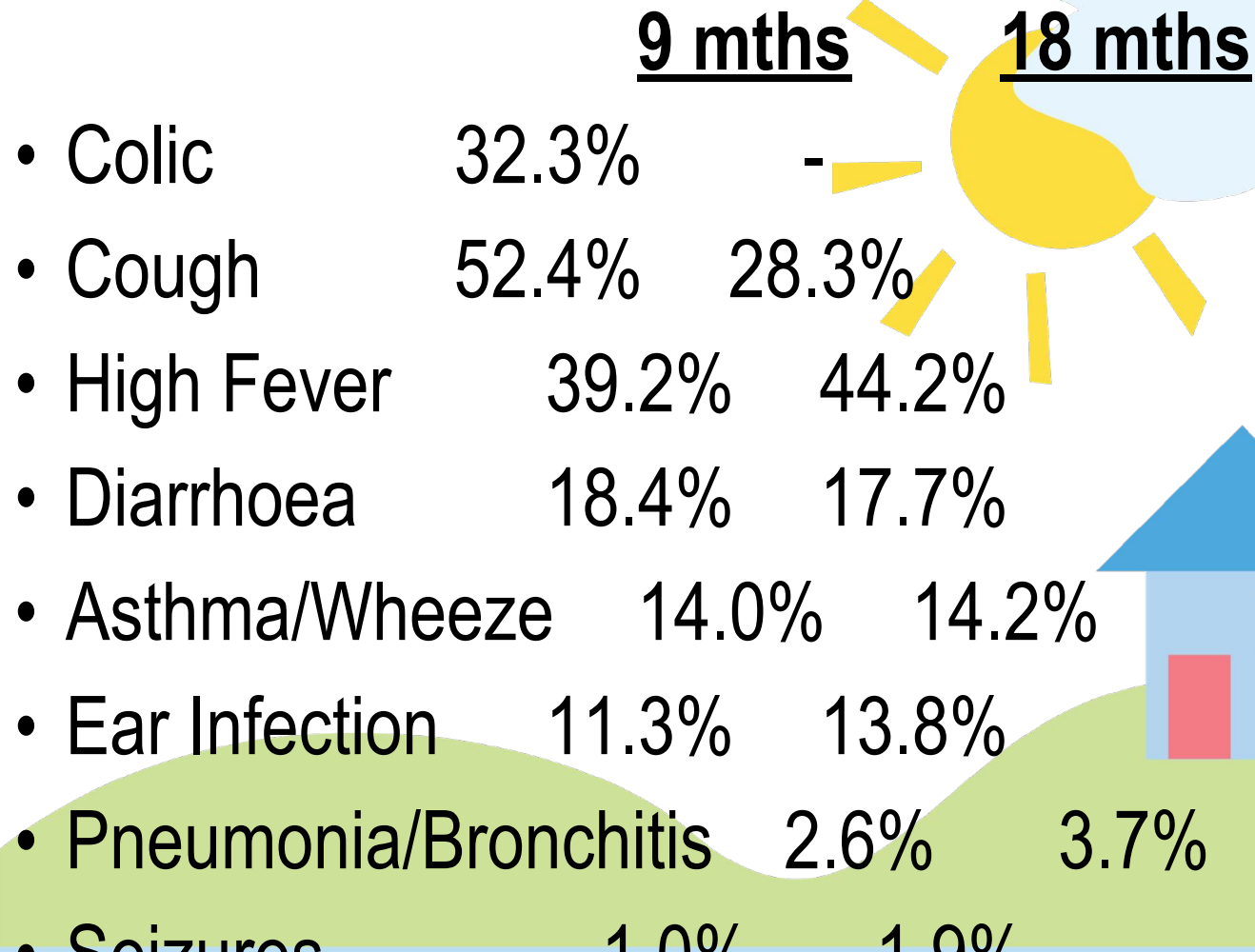


Accidents & Injuries



	<u>9 mths</u>	<u>18 mths</u>
• Falls on Head	16.4%	13.6%
• Other falls	14.0	7.7%
• Burns & Scalds	11.4	14.0%
• Fractures	0.5	0.6%

Common Illnesses

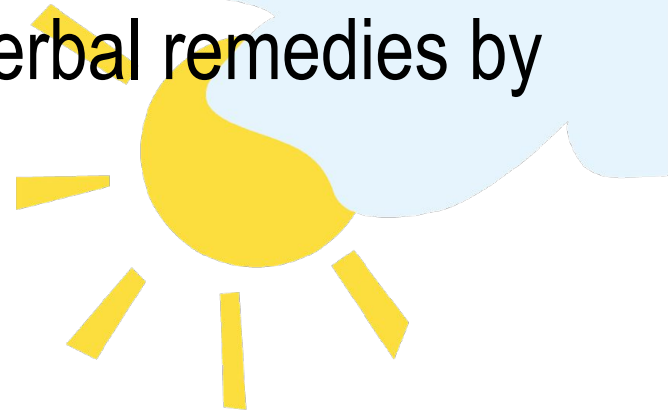


	<u>9 mths</u>	<u>18 mths</u>
• Colic	32.3%	-
• Cough	52.4%	28.3%
• High Fever	39.2%	44.2%
• Diarrhoea	18.4%	17.7%
• Asthma/Wheeze	14.0%	14.2%
• Ear Infection	11.3%	13.8%
• Pneumonia/Bronchitis	2.6%	3.7%
• Seizures	1.0%	1.9%

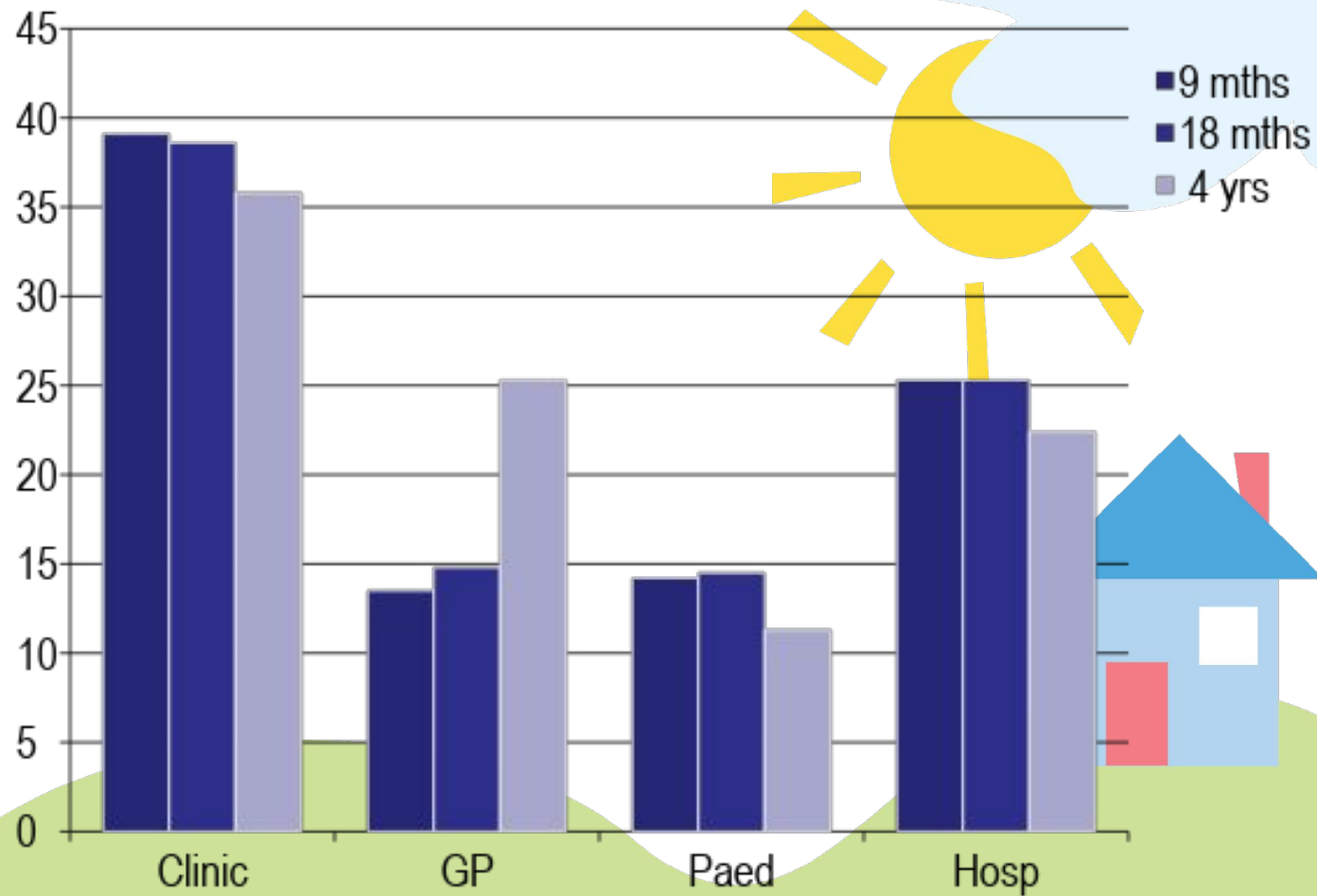
Herbal Remedies

22% of children have had herbal remedies by 9-12 months

- Fever Grass
- Mint
- Lime Leaf
- Garlic
- Cold bush
- Eucalyptus
- Rice and Peas bush
- Spirit Weed

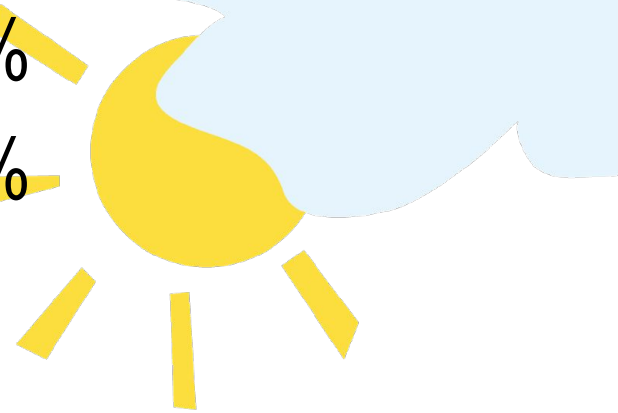


Health Service Use: Child a Little Sick



Specialist Referral 18 mths

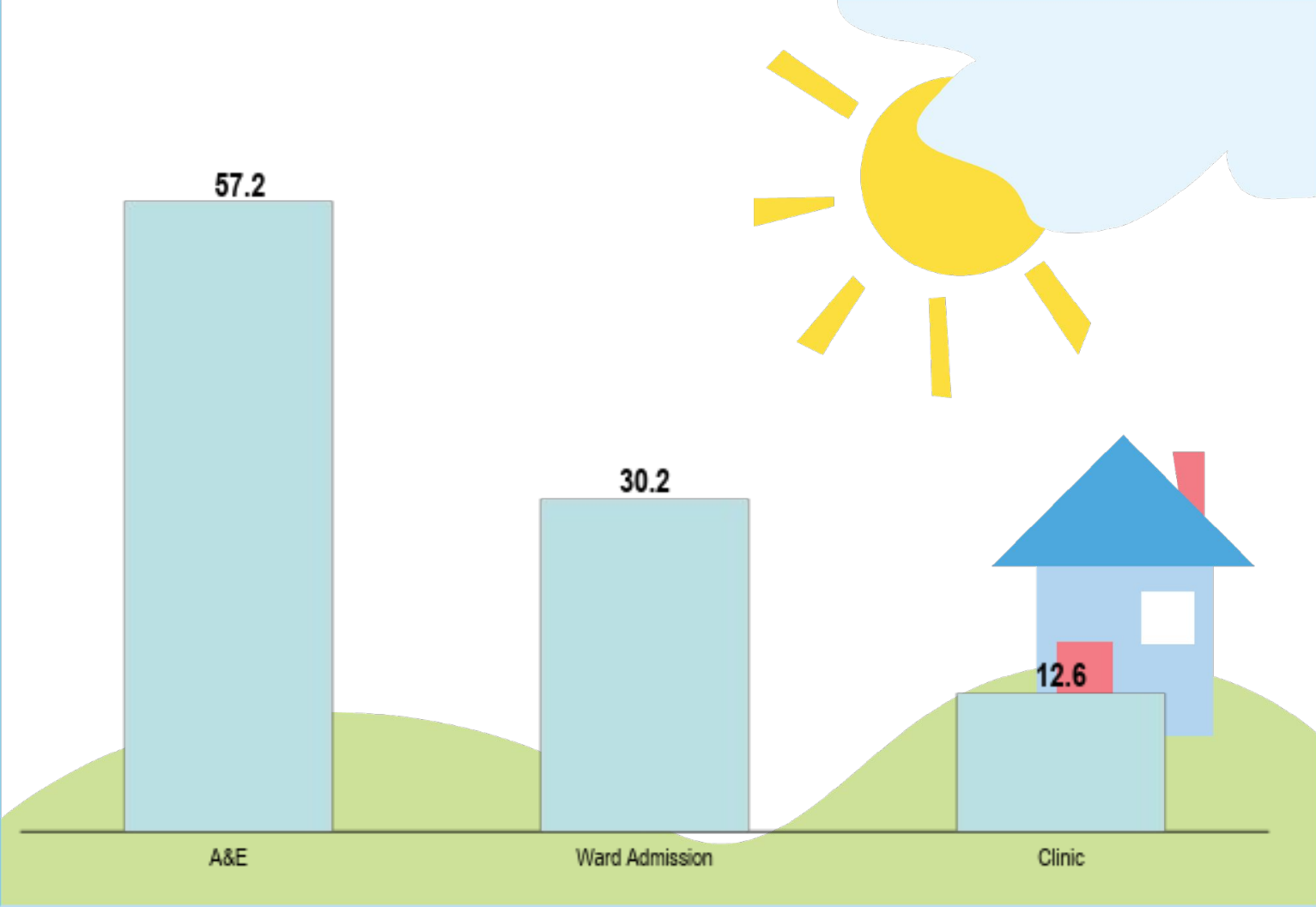
- Private Paediatrician 1.0%
- Hosp. Paediatrician 2.6%
- ENT Surgeon 1.1%
- Skin Specialist 2.5%
- Bone Specialist 0.8%
- Hearing 1.1%
- Vision 1.1%
- Development 0.1%



Hospital Visits

Hospital	Frequency	Valid Percent
Cornwall Regional	2206	13.0
Mandeville Regional	2056	12.1
Black River	382	2.2
May Pen	322	1.9
Princess Margaret	201	1.2
Savanna – La – Mar	1478	8.7
St. Ann's Bay	2530	14.9
Bustamante Hospital for Children	5714	33.6
Falmouth	90	.5
Port Antonio	237	1.4
Spanish Town	1364	8.0
UHWI	435	2.6
Total	17016	100.0

Hospital Service Utilisation



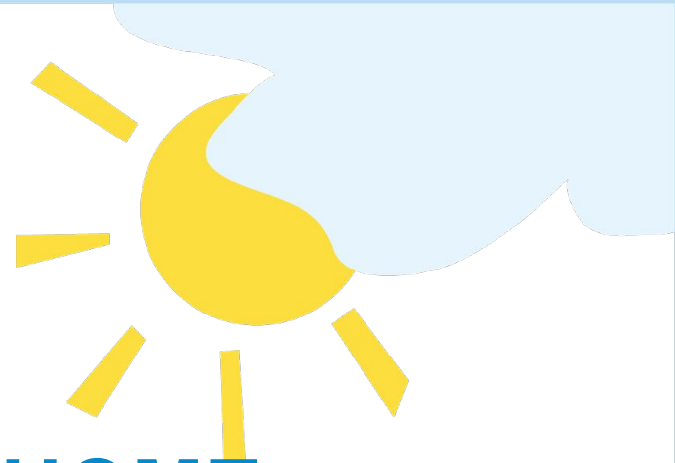
Outcome of Admissions

	Frequency	Percent
Discharged (No follow – up)	4514	89.9%
Died	118	2.3%
Outpatient Clinic	308	6.1%
Referred to specialist / outpatient clinic	44	0.9%
Transferred / Referred to another hospital	17	0.3%
Ward review	21	0.4%
Discharged against medical advice	1	0.0%
Total	5023	100%

Infant Mortality

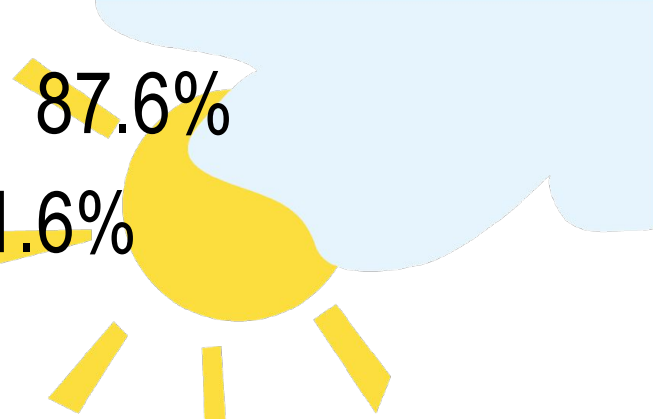
Death Classification	Frequency	Percent	Est. Rates
Neonatal Death (Under 28 Days)	200	85%	17.9/ 1000
Infant Death > 28 to 365 days	23	10%	2.1 / 1000
Unclassified	12	5%	
Total	235	100%	

STIMULATION AT HOME



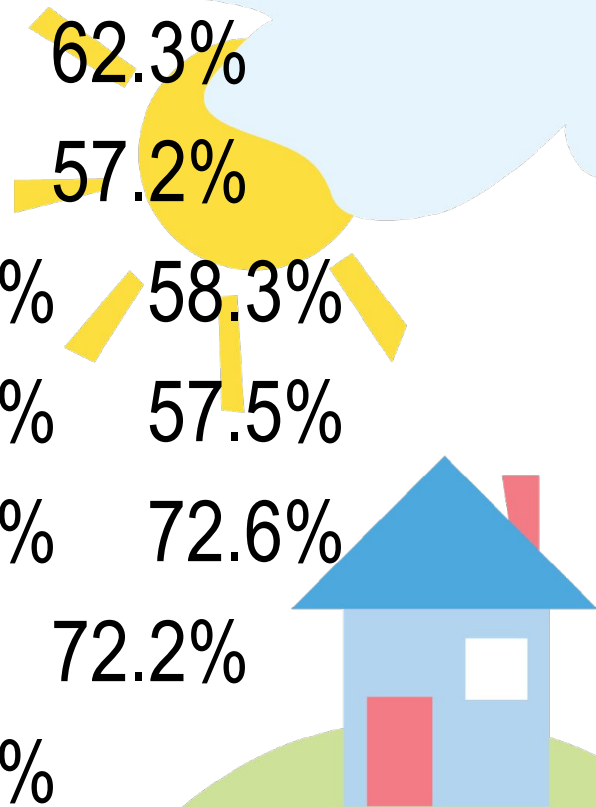
Resources in the Home

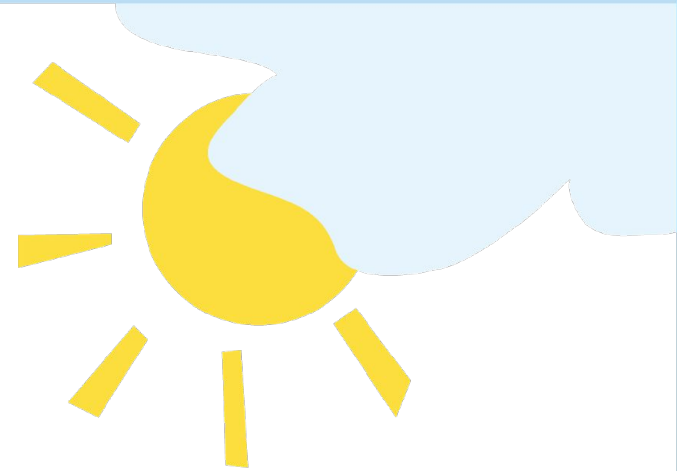
- Soft or Cuddly Toys 87.6%
- Push or Pull Toys 61.6%
- Blocks 25.4%
- Books for Babies 65.8%***
- Musical Toys 78.2%
- Toys that teach colour
shape, size 47.3%
- Toys that teach numbers/
letters 47.0%



Activities with Baby Most Days

- Singing 72.6% 62.3%
- Reading 51.6% 57.2%
- Playing with toys 70.2% 58.3%
- Playing games 64.9% 57.5%
- Naming things 66.3% 72.6%
- Counting 57.2% 72.2%
- Take for walks 60.0%
- Do something special 44.4%
(ice cream, buy things)



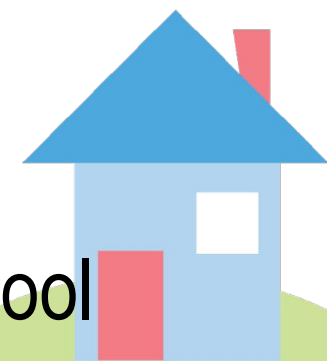


CHILD CARE AND PRE-SCHOOL



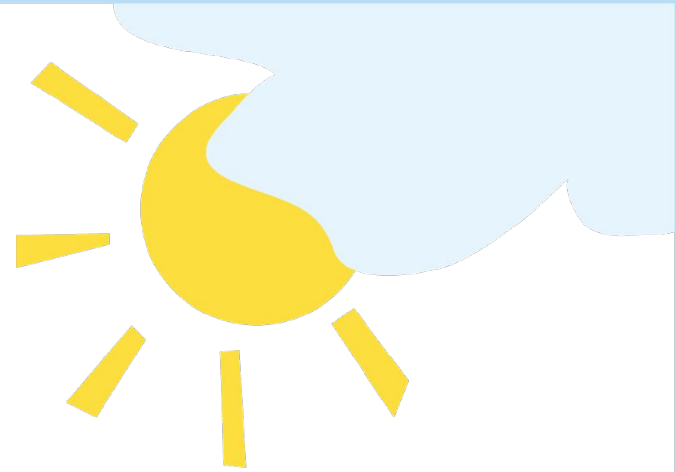
School Attendance at 4-5 years

- One child in 4 (23%) had prior school experience at Day Care/Pre-School
- Almost everyone is in school at 4-5 years (99.2%)
- Main reasons for not being in school
 - Affordability
 - Disability/Illness



Transportation to and from School

- Vehicle
 - Private Car 27.1%
 - Bus 8.4%
 - Taxi 28.2%
- Walk 39.7%
- Bicycle 0.8%



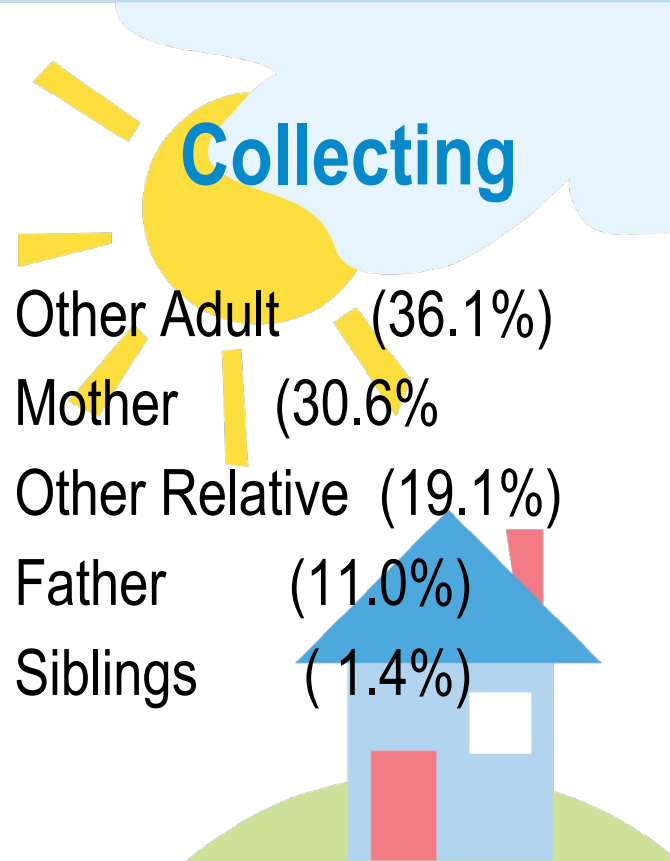
Who makes Daily Contact with School?

Taking

- Mother (40.8%)
- Other Adult (29.2%)
- Other Relative (14.6%)
- Father (13.3%)
- Siblings (1.1%)

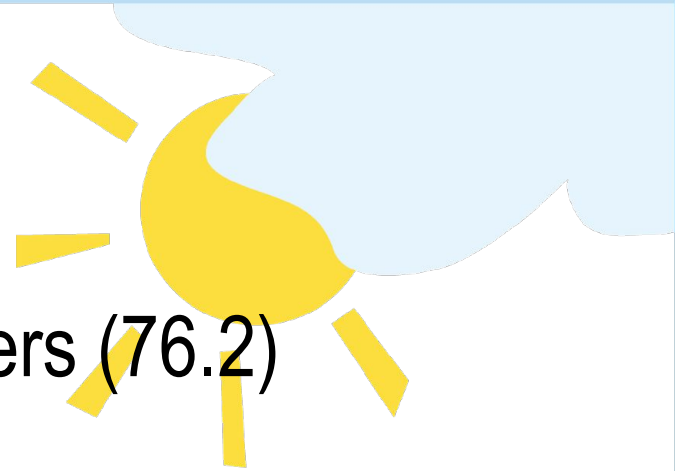
Collecting

- Other Adult (36.1%)
- Mother (30.6%)
- Other Relative (19.1%)
- Father (11.0%)
- Siblings (1.4%)



Child Response to School

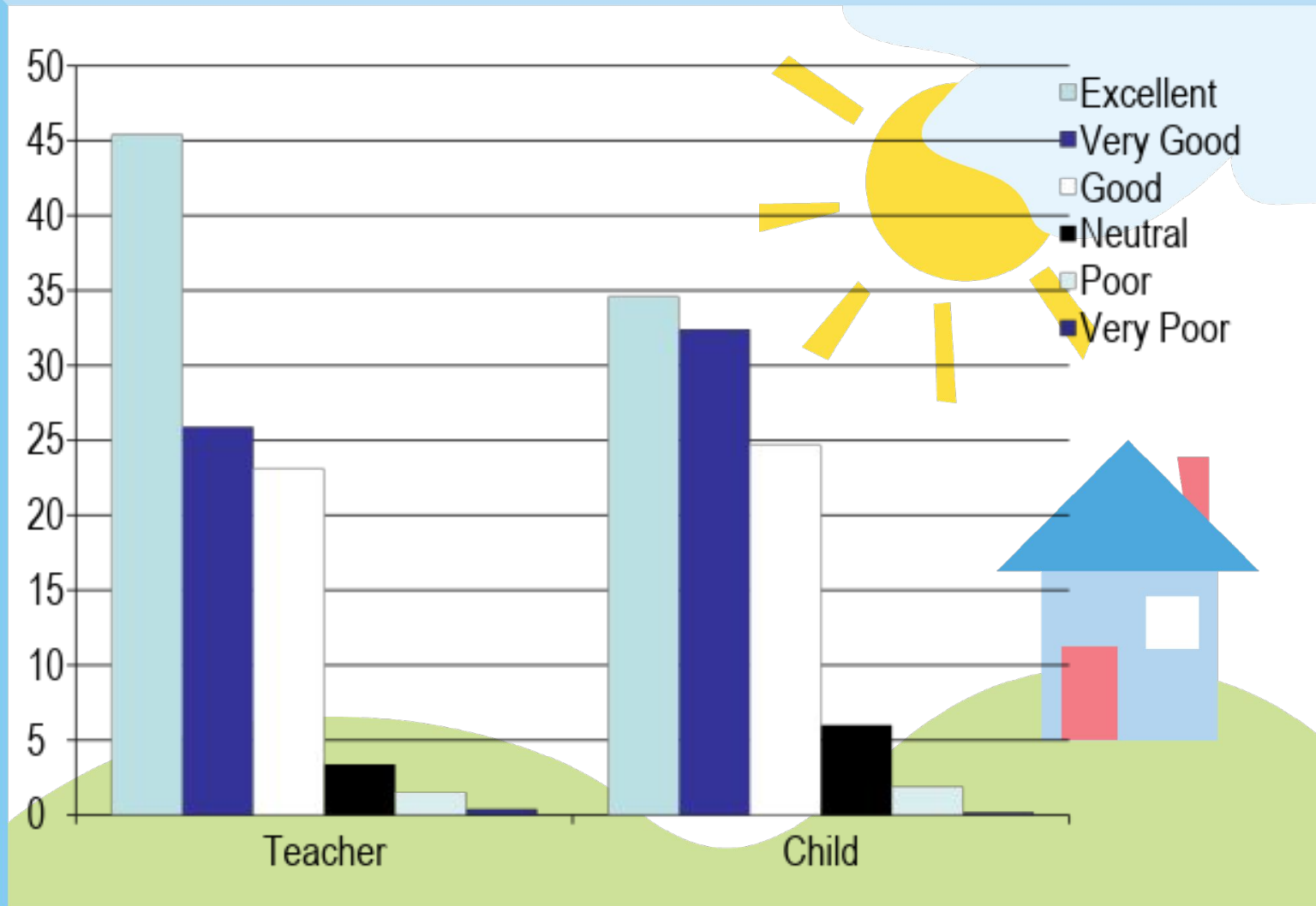
- Enjoys going (82.5)
- Gets along well with peers (76.2)
- Difficulty following rules (4.6%)
- Finds work difficult (2.9%)



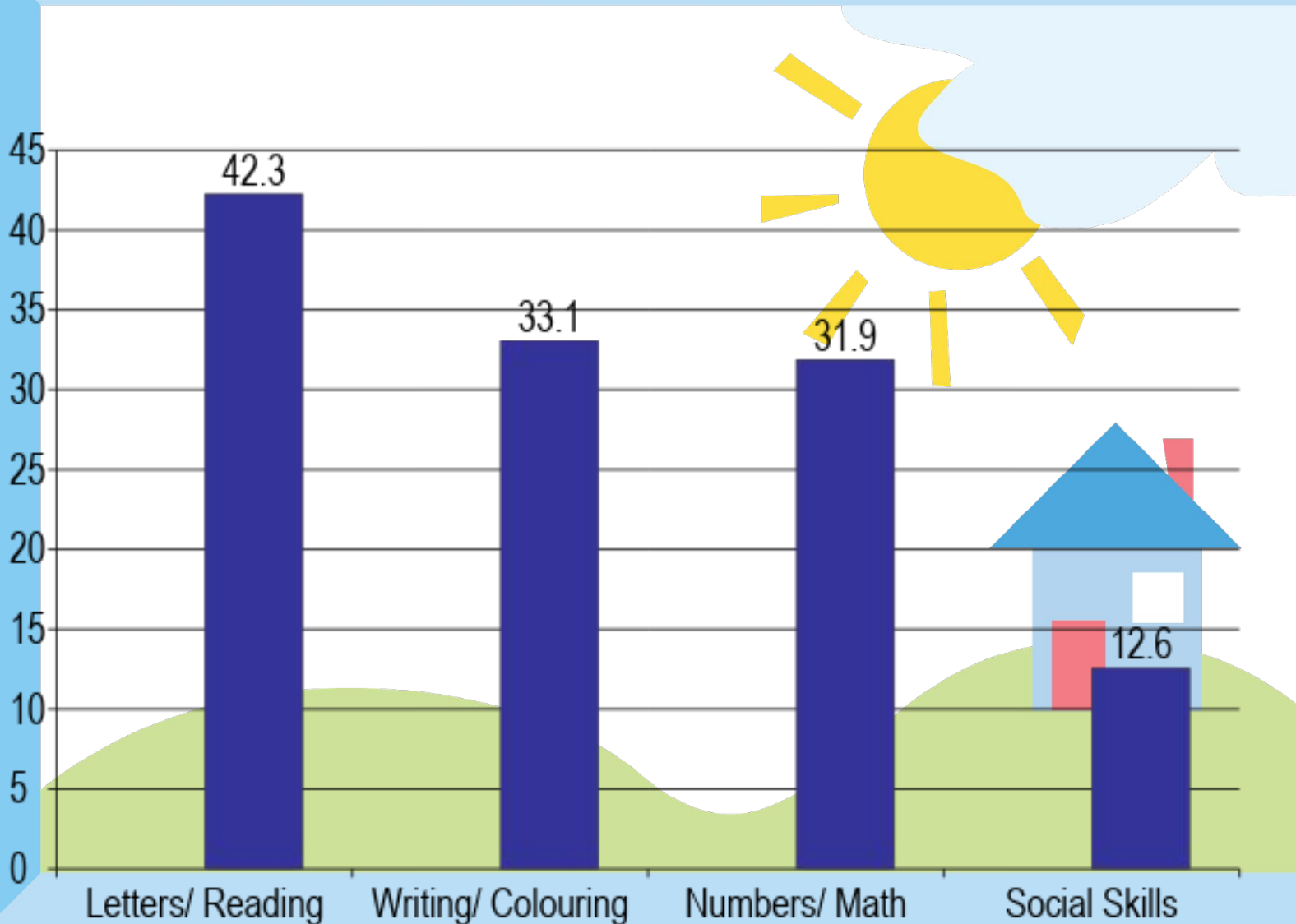
Options: **Always** **Often** Sometimes Never

Always/Often shown

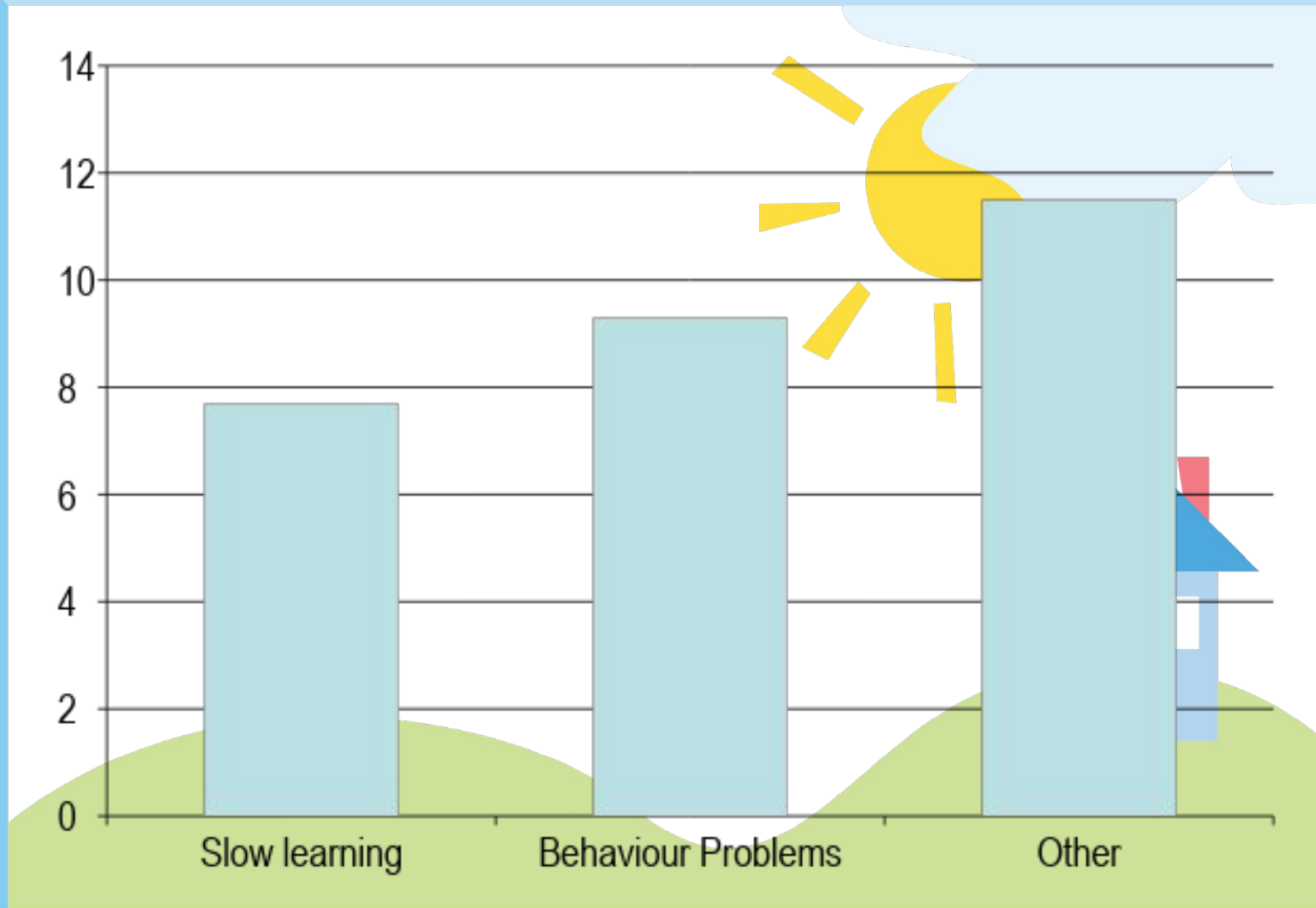
Parental Perception of Teacher/Child Performance



Child Performance Concerns (Mother)



Child Performance Concerns (Teacher)



Homework

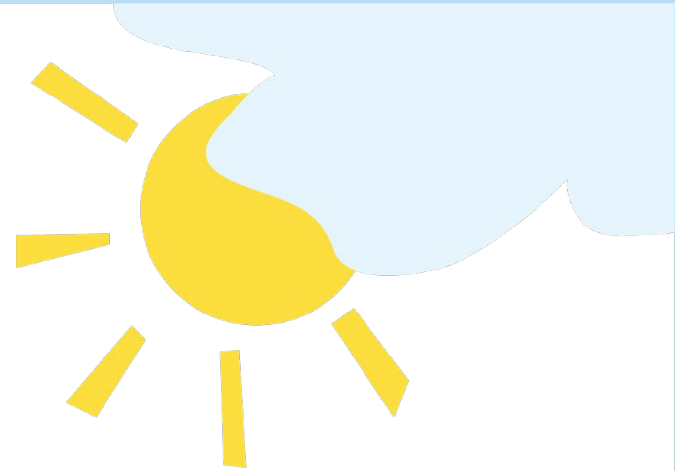
- **Frequency:**

- Daily 44.5%
- 2-3 times/ wk 43.0%
- Weekly 7.9%
- 2-3 times/ mth. 2.3%
- Never 2.2%

- **Mean homework time:** 30 mins; but up to 2 hrs.

- **Adequacy:**

- Too little 18.4%
- Just enough 76.5%
- Too much 5.1%



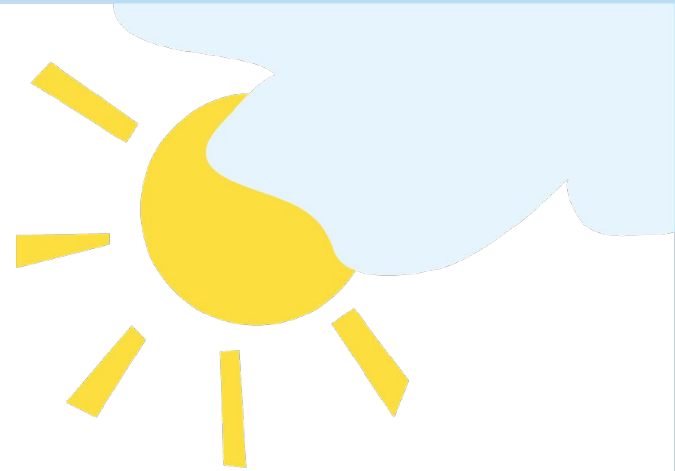
School Satisfaction

- **Satisfaction with school**

- Very Satisfied 48.1%
- Satisfied 36.4%
- Neutral 8.9%
- Dissatisfied 4.4%
- V. Dissatisfied 1.2%

- **Knowledge of ECC Inspection:**

- Yes 64.5%
- Uncertain 31.1%
- No 4.2%



Extra-Curricular Activities

- 24.9% of children are in ECA
- Primarily at school
- Higher Social Class

Dancing 27.9%

Swimming 15.2%

Football 14.9%



