



The UWI SCIENCE FESTIVAL 2023

75th Anniversary Edition

A Guide to Displays & Activities

**March 31 & April 1
Faculty of Science and Technology**



WELCOME TO THE UWI SCIENCE FESTIVAL – 75TH ANNIVERSARY EDITION

It is our pleasure to welcome you to The University of the West Indies and to host you over 2 days of festival activities – March 31 to April 1. We have a lot in store for you. Remember Science is Fun. Science is Innovation. Science is life.

LEARN MORE →

876-977-1785

WWW.MONA.UWI.EDU/FST

LAUNCH OF FESTIVAL

Physics
Quadrangle
9:30 a.m.

VIEW TOUR OPTIONS

Page 4

MAP

Page 8

FESTIVAL DIRECTORY

Page 9

MICRO- TALKS

Physics Rm B
Page 13

SCIENCE GAMES CENTRE

In Physics
Page 15

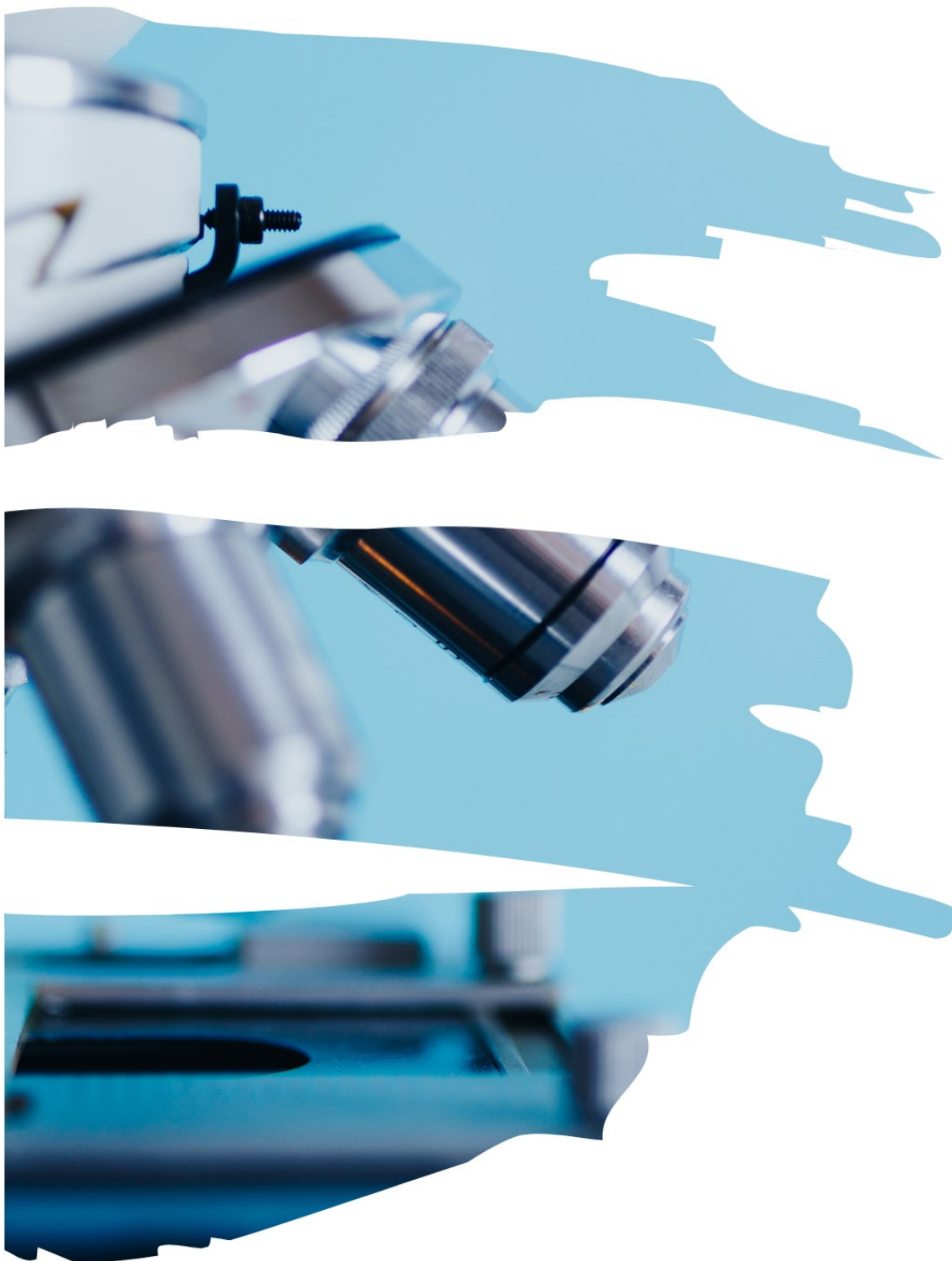
UNESCO FUN CENTRE

Page 16

VIRTUAL ARCADE

In Engineering

The UWI Science Festival



**MINISTRY OF
EDUCATION
STEMNOVATION
VILLAGE**

Assembly
Hall
Page 14

**FIND A
CHILL SPOT**

Physics Rn E

**MEET THE
CLOWN**

11:00 a.m. –
1:00 p.m.

**WATCH A
DISSECTION**

Life Science,
Spine

**CODED
SCAVENGER
HUNT**

Page 15

**MATH
QUIZZES**

Page 15

**PET AN
ANIMAL**

Engineering
Lawns

**TAKE A
PHOTO**

Physics
Entrance

The UWI Science Festival



EXPLORE

The UWI

ORGANIZE A TOUR WITH US



Co-Gen Plant

The UWI Mona Cogeneration plant is designed to supply the campus with all its electricity needs while simultaneously providing cooling to the Faculties of Medical Sciences, Law and Social Sciences.
Duration: 30 minutes | Participants: 10
Tour times: 10:00 a.m. - 4: p.m. (Fri.)
10:00 a.m. - 12 noon (Sat.)
Assembly point: End of Spine - Life Sciences



Life Science Biology Display

Our exhibit features a captivating array of specimens and information. You will learn about the intricate art of collecting and displaying specimens.
Duration: 20 minutes | Participants: 18
Tour times: 10:00 a.m. - 4:00 p.m. (Fri. & Sat.)
Assembly point: End of Spine - Life Sciences



Medical Museum

Our medical museum stores and exhibits objects of historical, scientific, artistic or cultural interest that have a link to medicine or health.
Duration: 30 minutes | Participants: 10
Tour times: 10:30 a.m. - 4:00 p.m. (Fri.)
Assembly point: Bus stop next to Juici Patties



BOOK NOW AT ANY OF OUR INFORMATION DESKS



EXPLORE

The UWI

ORGANIZE A TOUR WITH US



Mosquito Control Research Unit

MCRU Insectary facilitates the study of insects, example mosquitoes, which are know to transmit diseases such as chikungunya, zika, dengue fever and malaria.

Duration: 35 minutes | Participants: 20

Tour Times: 10:00 a.m. - 4:00 p.m. (Fri. & Sat.)

Meeting Point: End of Spine Life Sciences



Natural Products Institute

The Natural Products Institute (NPI) is a dedicated research facility that evaluates the biological activities of Caribbean natural resources including plants and fungi.

Duration: 30 minutes | Participants: 5

Tour Times: 10:00 a.m. - 4:00 p.m. (Fri.)

Meeting Point: End of Spine - Life Sciences



UWI Regional Centre Museum

The UWI Museum offers a semi-permanent exhibition relating to The UWI's history and development; generally alongside a smaller featured cameo exhibition, up for a time, focused on an area, person or theme.

Duration: 30 minutes | Participants 25

Tour Times: 10:00 - 4:00 p.m. (Fri.)

Meeting Point: Bus Stop next to Juici Patties



BOOK NOW AT ANY OF OUR INFORMATION DESKS.



Explore

THE UWI

VIRTUAL TOUR

Experience a virtual
Tour of the Science &
Engineering Branch
Library – YouTube

INTERNATIONAL CENTRE FOR ENVIRONMENTAL AND NUCLEAR SCIENCES

ICENS is multi-disciplinary research laboratories which covers a diverse range of the geochemical, environmental and nuclear sciences.
Duration: 15 minutes | Participants: 20
Chaperones: 2
Tour times: 1:00 – 4:00 p.m. (each 30 mins.)
Assembly point: Bus stop next to Juci Patties

CAMPUS TOUR INCLUDING A LITTLE PHYSICS

Join us on a walk around our campus.
Duration 1 hr 30 mins. | Participants: 15
Tour Times: 10:00 a.m., 1:00 p.m. & 3:00 p.m.
Assembly point: Science & Engineering Branch Library

FACULTY OF ENGINEERING TOUR

Engage with an open day exhibit in the Faculty of Engineering.
Duration: 1 hr | Participants: 20
Tour Times: 10:00 a.m. – 4:00 p.m.



SCIENCE FESTIVAL

>>>Anniversary Edition <<<

Our Exhibitors



FACULTY MAP



FESTIVAL DIRECTORY



01

THE TECH AND ANALYTICS HUB

LOCATION: BLOCK G (SPINE)

1. Global Anunaki Tech Enterprise Limited
2. Jamaica Technology Digital Alliance
3. Mona Geoinformatics Institute (F)
4. StarApple Analytics
5. Smart Choice Solutions Limited (S)

02

THE SCITECH AGENCIES

LOCATION: LAWNS ACROSS FROM LIBRARY

1. Bureau of Standards Jamaica
2. Island Traffic Authority / Road Safety Unit
3. Jamaica Constabulary Force
4. Meteorological Service Jamaica
5. National Certification Body of Jamaica
6. National Fisheries Authority
7. National Irrigation Committee
8. Planning Institute of Jamaica
9. Scientific Research Council (F)



FESTIVAL DIRECTORY



UNESCO EDUCATION VILLAGE LOCATION: ENGINEERING LAWNS

05

1. Stem Builders Learning Hub
2. UWI: Science & Engineering Branch Library
3. UWI: Marketing, Recruitment and Communications
4. UWI: Office of Graduate Studies and Research
5. UWI: Mona Social Services
6. Jamaica Environment Trust (F)
7. CMSS, Huawei

THE FST SCI-TEXPERIENCE LOCATION: SPINE

06

1. Chemistry
2. Computing
3. Earthquake Unit (F)
4. International Centre for Environmental & Nuclear Sciences
5. Life Sciences (including Port Royal Marine Lab)
6. Mathematics
7. Physics
8. The Biotechnology Centre



FESTIVAL DIRECTORY



STUDENT ENTREPRENEURS EXHIBIT (SEE)
LOCATION: IN FRONT OF C6/C7

07

1. Valtaz Jamaica (F)
 2. JAOS Shipping Services
 3. Neik
 4. Tae's Enterprise
 5. Exceptions Beauty
 6. Nashaccessories
-

08

STAFF TRADE & ENTREPRENEURIAL PLATFORM (STEP)
LOCATION: NEAR GUILD OFFICE

1. Estrella de Mar Inc
 2. Radiant Skaii
 3. Rose-Ann Smith
-

09

ANIMAL PETTING ZONE
LOCATION: ENGINEERING LAWNS

Hope Zoo

In the event of any emergency, call
876-551-0134



FESTIVAL DIRECTORY



10

JAMAICA DEFENCE FORCE

LOCATION: UWI CENTRAL LAWNS

11

FACULTY OF ENGINEERING

**LOCATION: ENGINEERING / ACROSS FROM
EDUCATION VILLAGE**

REMEMBER TO VOTE FOR YOUR FAVOURITE BOOTH.

RATE YOUR FESTIVAL EXPERIENCE

HAVE YOU MET A UWI SCIENTIST?



THE UNESCO MICROTALKS

PHYSICS LECTURE ROOM B

Session 1 (11:00 - 11:45 a.m.)

11:00 - 11:15 a.m.

Women in Science

Ms. Patricia Lewin, UNESCO

11:15 - 11:30 a.m.

Twelve ways to realize the potential of biotechnology: Your waste, My wealth

Dr. Sylvia Mitchell, Biotechnology Centre, The UWI

11:30 - 11:45 a.m.

Hypoglyciin: Findings and myths "inna mi ackee"

Dr. Donna Minott-Kates, Chemistry, The UWI

Session 2 (12:00 noon - 12:45 p.m.)

12:00 - 12:15 p.m.

Mathematics in real life

Dr. Nagarani Ponakala & Dr. Victor Job, Mathematics, The UWI

12:15 - 12:30 p.m.

"Chat bout, like ChatGP"

Dr. Paul Gaynor, Computing, The UWI

12:30 - 12:45 p.m.

Water management in rural Jamaica

Dr. Donna Minott-Kates, Chemistry, The UWI

12:45 - 1:00 p.m.

JDF Scope and Career Opportunities

Lt. Natasha St. A. E. Malcolm
Research Officer, Caribbean Military Academy



VISIT

MINISTRY OF EDUCATION & YOUTH

STEMNOVATION VILLAGE

Assembly Hall
Friday March 31, 2023
9:00-2:00 p.m

A discussion will be hosted with expert panellists in the fields of Data Analysis, Software Engineering & Engineering.

An exhibition showcasing Science, Technology , Engineering, the Art & Mathematics (STEAM) will be open to festival participants at 11:00 a.m. - 2:00 p.m

LET'S TALK ENTERTAINMENT

GAMES ROOM

MATERIALS LAB IN PHYSICS (NEAR STAGE)

GIVE AWAYS AND PRIZES BY MAIN STAGE
THROUGHOUT THE DAY



MATHEMATICS QUIZ COMPETITION

M3, DEPARTMENT OF MATHEMATICS

TREASURE HUNTS

**START: MATERIALS SCIENCE LAB
(NEAR STAGE)**

@ 11:00 A.M., 1:00 P.M. & 3:00 P.M.

**CHEMISTRY
KIT
GIVEAWAY**

**LIVE ENTERTAINMENT
2:00 – 4:00 P.M.**





UNESCO

GAMES CENTRE



Bounce abouts



Rock climber



Dunk Tank



Obstacle Course



Additional rides – \$200 each; or \$500 for 4



**FIRST RIDE WITH
FESTIVAL TICKET
FREE**

ALL AGES

THERE IS A RIDE HERE FOR YOU



MEET THE CLOWN

FRI. & SAT.
11:00 A.M. - 1:00 P.M.
HE'LL FIND YOU.



75 **ROOTED
READY
RISING**
1948 - 2023

THANK YOU

**THE UWI EXTENDS APPRECIATION TO ALL
SPONSORS, PARTNERS, PATRONS & SUPPORTS OF
THE UWI SCIENCE FESTIVAL:
75TH ANNIVERSARY EDITION**

Bartley's All in Wood ; Bureau of Standards Jamaica| Caribbean Climate Innovation Centre | Conrad Douglas and Associates Limited | Consolidated Environment Research Laboratory (CERES LABS) | Divine Fashion Boutique | Eden Joy Whole Foods | Environmental Solutions Limited | Estrella de Mar Inc. | Exceptions Beauty | Global Anunaki Tech Enterprise Limited | GraceKennedy Foundation | Hope Zoo | Huawei Technologies Company Limited | Island Traffic Authority / Road Safety Unit | Jamaica Constabulary Force | Jamaica Defence Force | JAOS Shipping Services | Jamaica Technology and Digital Alliance | Jah-Jireh Herbal Limited | Jamaica Environment Trust | JamKin Juice | Medicare Ambulance Service | Meteorological Service Jamaica | Mighty Spice Jamaica Limited | Mona Geoinformatics Institute | Nashaccessories | National Certification Body of Jamaica | National Commercial Bank | National Fisheries Authority | National Irrigation Commission | Neik; PKay Jewellery | Planning Institute of Jamaica | Radiant Skaii | Renewable Energy Design and Installation Services Limited | Rose-Ann Smith | Scientific Research Council | Smart Choice Solutions Limited | StarApple Analytics | Stem Builders Learning Hub | Sun Plus Limited | Tae's Enterprise | Taynas Body Care | TJK Rides | Transactions E-Pins Limited | UNESCO | Valtaz Jamaica | VM Wealth Management

