



GSI NEWSLETTER

Vol. XVI No. 5, December, 1997

CHRISTMAS MESSAGE FROM THE PRESIDENT

Dear Members & Friends,



Once again we are approaching that time - Christmas - that most of us look forward to for the whole year! It is a time for giving, spending time with friends and family, merry making and reflecting on the meaning of Christmas.

The G.S.J. will not be left out of the festivities, as we are putting on our annual Christmas get-together for the entire family - our **GEOLOSOPHY!** This year, it will be held at the Tree House on the Hope Zoo premises. It is a lovely setting and we hope you and your families will all join us on Sunday, December 7, 1997.

It has been a fairly busy year for the G.S.J. with our usual activities, but I will tell you much more at our Annual General Meeting in the New Year. The date will be circulated to members and will also be published in the U.W.I. Focus feature in the Monday edition of the Daily Gleaner.

Hope to see you all at the Geolosophy; if we do not, on behalf of the G.S.J. Council, I would like to wish everyone a happy and safe Christmas and a prosperous 1998.

*Paul Manning,
President, G.S.J.*

*Editor: R.G. Shettlewood
Assistant Editor: Joel Moo-Young*

The GSI Newsletter is a quarterly magazine published by the Geological Society of Jamaica. For further information about the Society, contact the Secretary/Treasurer, Department of Geography & Geology, University of the West Indies, Mona, Kingston 7. Telephone: 927-2728.

E-mail: geosocja@uwimona.edu.jm



THANK YOU

from the Editor

A special *thank you* to all the persons who made the GSI Newsletter a reality for 1997. The list of expression of thanks is very extensive, but I can not fail to mention the following:

- ◆ Mr. Joel Moo-Young, my devoted assistant editor.
- ◆ The *entire* staff of the Department of Geography & Geology, U.W.I.
- ◆ The Water Resources Authority, W.R.A.
- ◆ The GSI Council
- ◆ Ms. Chrisendeen Smith, W.R.A. Your assistance at all levels is appreciated tremendously!
- ◆ Mr. Allan Sappleton, M.G.D.
- ◆ Mrs. M.D. Wiggins-Grandison, Earthquake Unit, U.W.I.
- ◆ Ms. Christine Campbell, W.R.A.
- ◆ Supportive members of the Society.

Inside This Issue

- Seismic News 2
- Water Shortage or Inadequate Supply? 5
- Rapping with Gavin Gunter—GSI 1997-98 Scholarship Recipient 10

To everyone else who indirectly participated in ensuring that our quarterly publication was a '97 reality - **THANK YOU.**

"Geo-thought" for the day

- *"Attitudes are more important than scientific facts."*

Look out for October 25th Field Trip Report to the Central Inlier, in the next issue of GSI Newsletter.

SEISMIC NEWS

M.D. Wiggins-Grandison
Earthquake Unit
University of the West Indies - Mona

1. Jamaica Seismograph Network Earthquakes
April to July 1997
2. MIDAS, the Middle America Digital
Seismograph Consortium
5th regional meeting at UWI, December 9-11
3. Earthquake Unit Events
Visitors, trips, new equipment, etc...

1. JSN Earthquakes: April to July 1997

Hypocentres for 18 local and near Jamaica earthquakes were determined between April and June 1997 (compared to 7 in the first quarter). Add 16 events for July and the four month period has contributed 34 more earthquakes to the Jamaican catalogue. A list of these earthquakes is shown below. What's happening here? Why the big increase in earthquakes? Is the big one close at hand? Well, no answers for the last, but the first 2 questions can be explained.

In late March to early April, with the help of our Romanian visitor, all the old field equipment was pulled in and replaced with industry-standard, still analogue, field stations (see May issue Newsletter). The JSN is still using the 8 regular sites: Kempshot Hill, St. James; Spur Tree, Manchester; Bamboo, St. Ann; Portland Ridge, Clarendon; Yallahs Hill, St. Thomas; Stony Hill, Greenwich, and Mona, in St. Andrew, so far. Background noise tests were carried out at most of these sites and seismometers were re-located to the most favourable positions. The increase in earthquakes that were detected jumped by 39%, and the solved events jumped by 72%, illustrating the success of that first round of re-building the network.

In July, a second round of re-building was achieved. Two different systems for digital seismic data acquisition and seismic data processing were installed. The PC-SDA and PC-SDP were designed and written by personnel at the Seismological Division of the Geophysical Institute of Israel. The data from July 14 showed a marked improvement in not only numbers of earthquakes detected, but in how many were recorded by sufficient stations to allow hypocenters to be determined.

Two felt earthquakes were reported during the period: the April 16, Cockpit West event (see May issue of Newsletter) and one on May 30 in the Upper Liguanea Plain. The latter was very marginally felt in Red Hills, Constant Spring, New Kingston and Norbrook, all in St. Andrew.

List of Earthquakes

Date (EST)	Time (EST)	ag	Epicentral Location
April 03	07:56 PM	2.4	Lower St. Catherine Plain
16	11:10 AM	1.7	Bull Bay, St. Andrew
16	1:33 PM	3.8	Cockpit West, Trelawny /St. Eliz, FELT, MMI 5
20	11:34 AM	2.8	Blue Mtn West, St. Andrew
30	12:40 AM	2.5	Upper Lig Plain, St. Andrew
May 03	10:59 PM	2.9	Central Cayman Trough
7	03:50 PM	1.8	Lower Liguanea Plain, Ken
13	05:26 AM	1.9	Bull Bay, St. Andrew
16	05:41 PM	3.2	Portland Bight, S Coast Ja
21	01:47 PM	2.2	Sen WagWater Tr, St And
23	09:47 AM	4.2	Central Cuba
24	01:56 PM	2.2	Offsh Cow Bay, St. Thomas
30	8:48 PM	2.2	Upper Lig Plain, St. Andrew, FELT MMI 2
June 09	06:08 PM	2.4	Offshore Kingston
17	02:13 PM	2.1	Lower Lig Fan, St. Andrew
27	04:44 AM	2.8	St. Catherine Plain
27	01:53 PM	2.6	Bull Bay, St. Andrew
27	04:34 PM	3.0	Offsh Black River, St. Eliz.
28	06:35 AM	2.4	Porous, Clarendon/Manch
30*	07:24 PM	2.2	Bull Bay, St. Andrew
July 13	10:06 PM	2.0	Offshore Hellshire Hills
13	10:59 PM	1.5	Blue Mtn W, St. Andrew
14	05:38 PM	2.0	Santa Cruz Mtn N, St. Eliz.
16	01:16 PM	1.1	Blue Mtn West, St. Andrew
19	03:22 AM	1.2	Offsh Cow bay, St. Thomas
19	04:02 PM	0.9	N WagWater Tr, St. Andrew
19	08:06 PM	0.6	Blue Mtn W, St. Andrew
20	12:18 AM	0.9	Upper Lig Plain, St. Andrew
20	10:48 AM	2.9	Lower St. Catherine Plain
20	02:33 PM	2.2	Offshore Portland NE
22	11:28 AM	1.8	Bull Bay, St. Andrew
22	10:11 PM	3.5	Oriente Fracture Zone E
28	10:54 PM	2.0	Nassau Mt, St Eliz/Trelawny
30	11:03 AM	1.2	St. Margaret's Bay, Portland
31	10:13 AM	2.2	Blue Mtn W, Portland

* July in Universal Time Coordinated, the official time used at JSN and other seismograph networks.

2. The MIDAS Touch

The Consortium for forming the Middle America Digital Seismograph Network met for the first time in Barbados in 1990. Middle America defines the region of the Americas from latitude 35° North down to 5° South, longitude 55° to 125° West. The main goal of the consortium is to establish a regional network of Digital Broad-Band Seismograph Stations. The rest of the world has already travelled this path, especially in the northern continents such as Europe, with regional datacentres such as GEOSCOPE, ORFEUS, NORSAR. While some countries in MIDAS, such as the USA and Mexico, are ahead of the others in establishing their own local BB networks, the first 6-component MIDAS station was established at the University of Panama in October 1995.

To facilitate the effective and near real-time access to data from MIDAS stations by participating countries, the group has established a home-page

[<http://www.neic.cr.usgs.gov/midas/midas.html>] which is linked to the National Earthquake Information Centre (NEIC)/World Data Centre A, in Colorado, USA. Eventually, all member countries will have a homepage linked to MIDAS. The INTERNET will be the medium by which all earthquakes above a certain threshold magnitude will be uploaded for direct access by others. Not only will parametric data such as geographical coordinates, magnitude, origin time and arrival times of different phases, be shown, but the waveforms of significant events will be available. CDs of the data will be produced and distributed regularly.

Furthermore, with all this planned data compilation and capture, MIDAS has begun to set-up a regional earthquake and (possibly tsunamis) data-centre at the Puerto Rico Seismograph Network (PRSN) at the University of Puerto Rico - Mayaguez. The MIDAS homepage will eventually reside at the PRSN. It is worthwhile checking the PRSN's home-page that may be accessed at <http://rmsismo.upr.clu.edu>.

Jamaica will host the 5th regional MIDAS meeting from December 9-11, 1997 at the UWI. The organization has opened this meeting to regional disaster managers. The planned agenda includes the unveiling of the MIDAS logo and at least a first draft of a MIDAS Map of Seismicity which will be a glossy 42 x 56 inches in Universal Mercator Projection, in English, Spanish and French. All cities in the region will be shown as will historical seismicity, topography and bathymetry. The map is the brainchild of outgoing NEIC Chief Scientist, Robert Masse.

3. Earthquake Unit Events

The EQU produced its own map of Jamaican Seismicity 1990-96, at scale 1:250,000. The map was part of a Scientific and Environmental display for the Caricom Heads of Government meeting held in Montego Bay in July. The effort was coordinated by Carlton Baxter of the Mines and Geology Division. **Thanks to MGD** for allowing us to digitize the coastline and major fault lines **and to Mark Ramaelaere** of the Environmental Resources Division for printing it for us. A small copy of the map is shown below, (please see page 4).

The EQU has benefitted from a number of visitors this year. In July, we had 3 guests from the Geophysical Institute of Israel, Seismological Division: Dr. Avi Shapira, Director, who has been here before, Mrs. Batia Reich, Analyst, and Ms. Alona Malitsky, Programmer. In their three-week sojourn, the visitors installed the PC-SDA and -SDP programmes and trained EQU staff how to use them. Additionally, Avi and Paul Williams, our Seismic Officer - Technical, went across the island and calibrated all our stations. The PC-SDP operates in Windows 95 and most operations can be done with a click of the mouse.

Ernest Parkes, our Analyst, is thrilled with the new system. Moreover, the data list presented earlier speaks for the benefits of the new JSN. I would say, the JSN has come of age - we are ready for 2000 and beyond! Look out for the EQU's homepage, coming soon!!

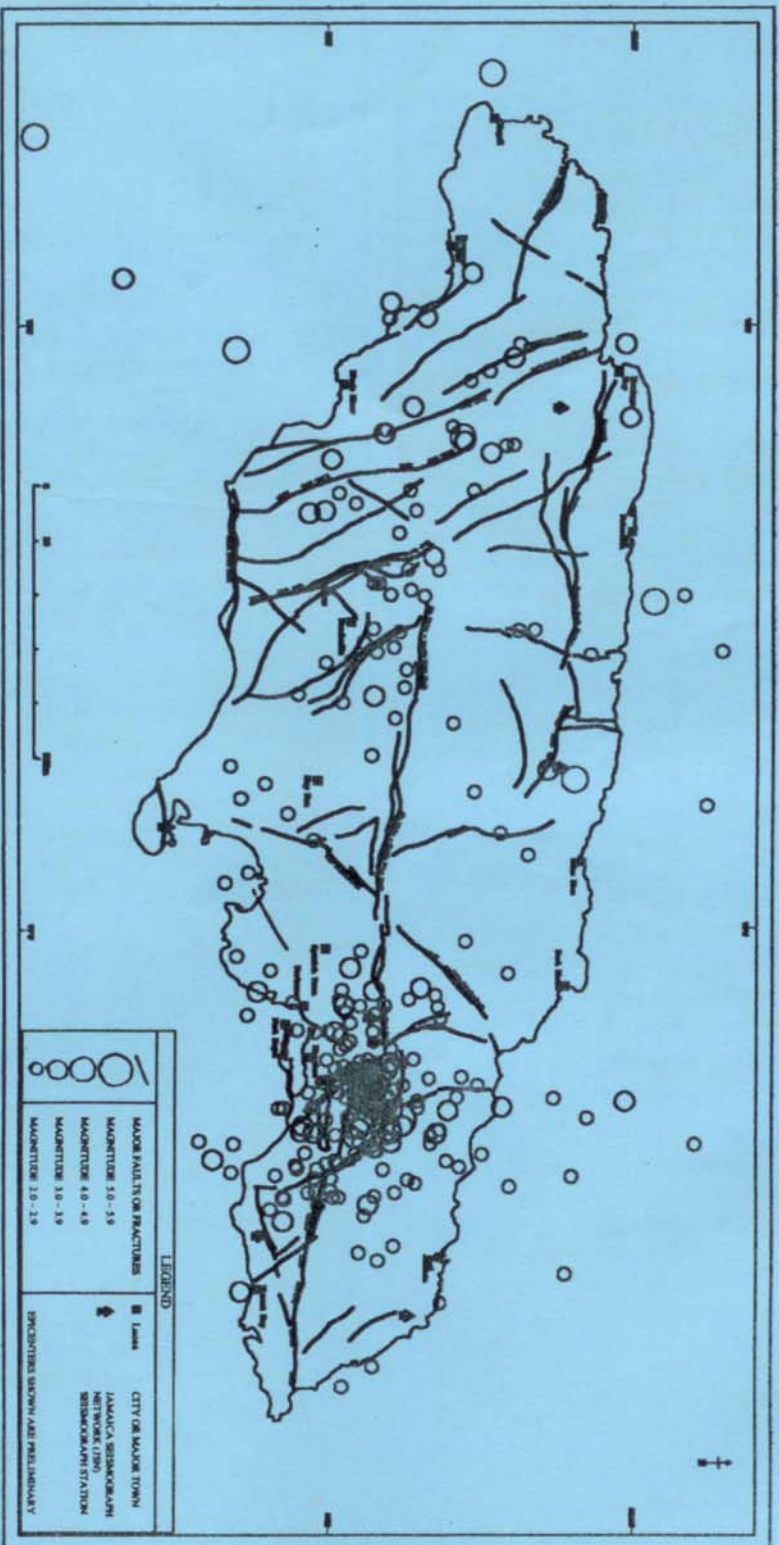
MISSION STATEMENT

• NATIONAL IRRIGATION COMMISSION •

OUR MISSION IS TO:

- ◆ Maximize effective use of irrigation through conveyance and distribution efficiency
- ◆ Provide guidance and training in on-farm water management techniques so as to increase productivity and profitability in the agricultural sector
- ◆ Achieve and maintain financial self-sustainability of the Irrigation Industry.

SEISMICITY OF JAMAICA, 1990 - 1996



GENERAL

*Christine Campbell
Water Resources Engineer
Water Resources Authority*

Water Shortage or Inadequate Supply?

Jamaica's exploitable water resources amount to 4,083.5 million cubic metres per year. In 1985 the demand for water in the island was estimated to be 995.5 million cubic metres, representing only 24% of these resources. Water demand is expected to increase to 1,684.0 million cubic metres in 2015, still less than half of the island's exploitable water.

Why then is water supply restricted in some areas, and worse, non-existent in others across the island?

While the demand for water amounted to 995.5 million cubic metres in 1985, only an estimated 913.1 million cubic metres were supplied representing a supply deficit of 9%. The tourist, agricultural and domestic sectors all suffered inadequate supply. Supply deficits were experienced in all parishes.

One problem is that both the demand for water and the exploitable resources are unevenly distributed. The greatest demand occurs in the south of the island where agriculture, industry and the population are concentrated. The most available water, on the other hand, is found in the north of the island, being heavily influenced by geology.

There is already transfer of water from one parish to another, the main beneficiary being the urban domestic sector. Kingston and Montego Bay received 72.8 million cubic metres from adjacent parishes in 1985. However, increasing the import-export of water between parishes is hindered by the high cost of conveyance infrastructure, and the need to ensure that exporting parish demands are met.

A second problem is the poor maintenance of water distribution systems, which has lowered supply efficiencies. In some instances increases in source production have become necessary to take into account losses in these systems. Leakage from domestic water supply systems in the island has been estimated to be between 30 and 40%. Further, it has been estimated that 85% of the existing capacity of non-agricultural waterworks in Jamaica are in need of renewal work.

Water supply to rural communities is limited by a lack of infrastructure in many areas.

Without the rehabilitation of existing waterworks, the laying of new infrastructure and the development of new sources of water supply, Jamaica's supply deficit will increase from 9 to 46% by the year 2015. Capital investment amounting to 978 million US dollars was estimated in 1985 in order to carry out

this work. Such a large investment will require significant forward planning in which critical water projects are identified and capital expenditure is phased.



DID YOU KNOW??

- *Dr. Raymond Wright* is recognized throughout the Caribbean as one of the region's energy experts. In over 80 papers in various local and international journals, he explores renewable energy, petroleum exploration, environmental geology, and biostratigraphy. Dr. Wright is Group Managing Director of Petroleum Corporation of Jamaica. Born in Southfield, St. Elizabeth, his early education started at Clarendon College. Later, he was educated at Durham and London Universities in England and Stanford University, California, USA. He was Director of The Geological Survey and Commissioner of Mines prior to coming to PCJ in 1979. At PCJ he spearheaded the search for oil and gas in Jamaica.

Among the awards he has received, are the *Commander of the Order of Distinction (CD)*, conferred in 1989, and the *Chubb Award for Excellence* in the Geological Sciences in 1993.

Dr. Wright's most recent publication is a book entitled "*Jamaica's Energy, Old Prospects, New Resources*", where he explores the Caribbean energy scene (with particular reference to Jamaica), emphasizing the necessity for increasing renewable energy technologies.

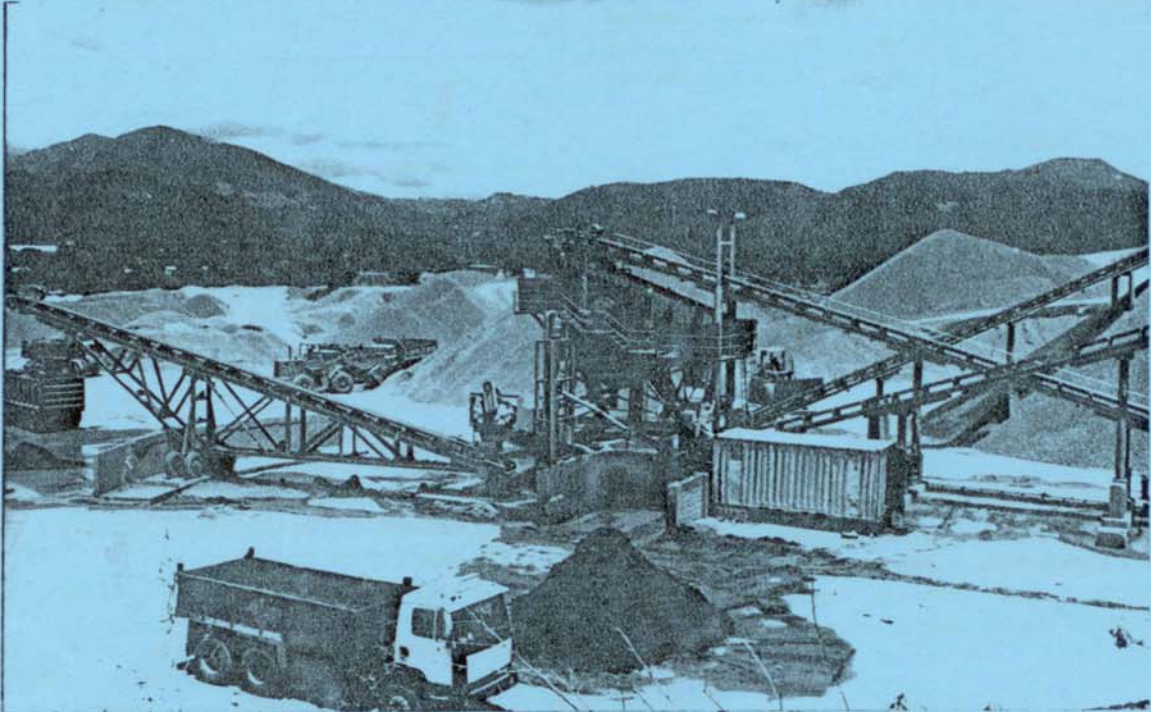
Be sure to obtain your copy, if you have not already done so; you will find it to be an important source of energy information!

"The Scientist's mind never becomes tired, but sometimes it becomes 'bored' with the sort of food it gets!"

(Adapted)



GEO-SCIENCE CAUGHT ON CAMERA



Crushing Facilities at the Jamaica Premix Limited, St. Thomas. Photograph captures the second screen deck (wet deck). Final screening and washing occur here. The coarse and fine aggregates are carried along separate conveyor belts to their respective stock piles.



Production Drilling, Northwest of the Bito Quarry at The Jamaica Gypsum and Quarries Limited (JGQ).



GEO-SCIENCE CAUGHT ON CAMERA



Crushing Plant at Quarry Site, Lydford, St. Ann.



Aggregate (for exportation) being deposited into the ship's hold at the shipping port in Ocho Rios.

Photographs taken by Dionne Laughton, M.G.D.

JUST FOR INFORMATION

- ◆ The functions of the Mines & Quarries Department of the Mines & Geology Division are as follows:
 - To legalize all quarry operations;
 - To assist investors in acquiring exploration licences and in giving information on mining regulations;
 - To quantify minerals for purposes of royalty and levy;
 - Monitor quarries to ensure safe and environmentally sound operations;
 - To ensure that government collects quarry tax;
 - Monitoring the bauxite and alumina plants and mines to ensure safe operations, to give advice and coordinate inter-company safety enhancement programmes;
 - Investigate complaints from the public about mining and quarrying operations in order to minimize adverse environmental effects of mining and quarrying;
 - Monitoring of known illicit quarrying areas;
 - Monitoring of areas being explored for metallic minerals;
 - Granting of export permits for minerals;
 - Granting of blasting licences.
- ◆ The Jamaica Bauxite Institute (J.B.I.) was established in 1976 with its principal mandate being to serve the bauxite/alumina industry on behalf of the government of Jamaica. This primarily involves monitoring the industry locally and internationally in order to provide the government with the best advice to optimize benefits from our bauxite resources for the sustained development of Jamaica, its people and the participating companies. In addition, the J.B.I. is involved in environmental monitoring of the industry as well as development programmes in communities affected by the bauxite/alumina industry.

JUST A REMINDER

The 15th Caribbean Geological Conference will be held in Jamaica from June 29th to July 2nd 1998. The meeting will comprise four (4) days of technical sessions and will examine the full range of geological research in the Caribbean. There will be pre- and post- conference field trips schedule for June 27-28 and July 3-4 respectively. For further information contact The Department of Geography & Geology:

Telephone: 876-927-2728
Facsimile: 876-977-6029

INFOBITS

- ◆ On Saturday October 25, The Water Resources Authority (WRA) had a long service and special awards ceremony. Twenty-one persons received awards for service ranging between 10 and 29 years. Guest speaker at the ceremony was the Minister of Public Utilities & Transport, the Hon Robert Pickersgill. Also giving an address was the Chairman of the WRA board and the Adviser to the Prime Minister on Science and Technology - Dr. Arnoldo Ventura. Both speakers recognised the role that the WRA was playing in the Water Resources Industry in Jamaica.

In November, one member of the WRA staff will be in Israel on a training programme. This programme is to last for six weeks.

The WRA is on the Internet and can be accessed on the Worldwide web at www.wra-ja.org. Very soon E-mail facilities will also be attached to this site. At present the website contains information on the general hydrology of the island. There are also special reports on the recent drought conditions that affected the island; there is also some general information on the organisation and its structure and role.

- ◆ During mid-October, Professor Stephen Donovan (UWI, Mona) undertook a flying visit to the USA. He visited the Florida Museum of Natural History, University of Florida, Gainesville, to undertake collaborative research with Mr. Roger W. Portell on the fossil spatangoid echinoid (=heart urchins) of the late Pliocene Bowden Formation, southeast Jamaica, which has been identified as *Schizaster? sp.* A paper by Donovan and Portell has been submitted to Caribbean Journal of Science. Professor Donovan then moved on to the Annual Meeting of the Geological Society of America in Salt Lake City, Utah. Here he attended a short course of the Paleontological Society, entitled the "Geobiology of Echinoderms", and made two presentations on Caribbean geology. These included a poster by Portell, Domning, Emry, Donovan and Schindler on "Zoogeographic and tectonic significance of a rhinoceros from the Eocene of Jamaica", and an oral presentation by Donovan and Harper on "Crinoids and brachiopods in the Miocene of the Antillean region".
- ◆ Professor Edward Robinson (Department of Geography & Geology, U.W.I.) attended the Second Meeting of IGCP Project 393 on Neritic Events at the Middle-Upper Eocene Boundary, held in Vic, Barcelona, Spain, from September 2-6. Prof. presented a paper on problems of the correlation of this part of the stratigraphic column in the western hemisphere, together with possible solutions. The first two days were spent in workshop mode, while the remaining days were spent in the field in northern Spain, looking at critical sections illustrating the passage from the middle to upper Eocene. Terrific scenery! Somewhat similar to that associated with the Grand

Canyon in North America, but covered with vegetation. The Department of Geography & Geology, is planning to get some of the specialists concerned with this project to visit the island early in 1998, to look at our sections (Yellow to White Limestone transition, and lower White Limestone).

◆ **HOORAY!!!**

Our own Professor Edward Robinson has been appointed by UNESCO/IUGS to serve on the Scientific Board of the International Geological Correlation Programme for four years.

- ◆ Carlton Baxter and Norman Harris of The Mines and Geology Division (M.G.D.), attended the 1997 Geological Society of America (G.S.A.) Conference, held in Salt Lake City, Utah, on October 18 to 24, 1997. Both participants presented a poster display on "Recent Advances in Jamaica's Economic and Environmental Geology". Also on display were posters from the Department of Geography and Geology, U.W.I. depicting Geohazards in Jamaica.

The poster session was well received by the many persons who visited the Jamaica Geological Survey Booth. A lot of interest was shown in areas for mining opportunities and caving activities in Jamaica.

The G.S.A. Conference was a great success; there were many opportunities to meet Geologists from all over the world, view geological exhibits and attend oral presentations.

- ◆ PCJ web-site will be launched very soon. Information on energy resources (wind, solar, biomass, hydro-power, oil & gas, ocean thermal energy conversion) and statistics on the oil industry in Jamaica, can be accessed. Look out for the web-address!
- ◆ There will be one or two sessions devoted exclusively to the industrial mineral resources of the Caricom area at the 1998 **Society for Mining, Metallurgy & Exploration (SME) Annual Meeting** to be held in Orlando, Florida **March 9-12, 1998**. Papers were invited from professionals in Jamaica, Trinidad, Guyana and Belize. So far, only five Jamaican authors have submitted abstracts.

Additional programming at this conference will include coal, mining and exploration, mineral and metallurgical processing, mineral resource management, the Society of Economic Geologists, short courses, field trips and specialty technical sessions. The opportunity will be taken - once again - to let the world know of the industrial minerals resources of Jamaica and the favourable investment climate which exists here.

◆ **CALL FOR PAPERS!**

The Editor of the *Journal of the Geological Society of Jamaica* - Professor Edward Robinson - is appealing for papers for Volume XXXIII of the Journal. Papers MUST be submitted by March 6, 1998. For further information, please do not hesitate to contact Prof. Robinson at the

Department of Geography & Geology, The University of the West Indies, Mona, Kingston 7, Jamaica W.I.

- ◆ The Annual General Meeting (AGM) of the Geological Society of Jamaica will take place on Saturday, the 31st of January, 1998, on the University Campus.
- ◆ **POSTGRADUATE SCHOLARSHIP**
Betsy Bandy, who is a M. Phil. Student in Geology, has been awarded a UWI Postgraduate Scholarship for 1997/98. Betsy's research project on a mineralogical study of the black sands of the south coast of Jamaica is being supervised by Dr. Trevor Jackson. During the summer Betsy spent 8 weeks at the Camborne School of Mines (CSM) in Cornwall where she examined her sands with the use of x-ray diffraction and SEM techniques, under the supervision of Dr. Jackson and Professor Peter Scott of CSM. Her visit to the England was funded by UWI Postgraduate award and Air Jamaica.
- ◆ Trevor Jackson visited Florida International University and Camborne School of Mines on an IDB short-term training fellowship in July and August. Both at FIU and CSM he used and operated their SEM, microprobe and X-ray diffractometer analysing rock samples from St. Vincent, Cuba and Jamaica.
- ◆ Ian Brown has joined the Department of Geography & Geology as its Museum Curator. Ian was previously employed to the ICWI Learning Centre, and is a graduate of geology from the UWI.

*The GSJ welcomes short articles, technical information, reports, news items, etc. which are suitable for inclusion in the Newsletter. As always, the Society solicits longer articles for the Journal. Submissions should be made to **GSJ Newsletter** c/o The Department of Geography and Geology, University of the West Indies (UWI).*

Membership in the Society is opened to all persons interested in Geology and related earth sciences. Applications should be made to the Secretary/Treasurer.

RAPPING WITH GAVIN

Meet Geological Society of Jamaica 1997-98 scholarship recipient - Gavin Gunter.



Gavin Gunter is the recipient of the 1997-98 G.S.J. Scholarship Award and a student who heads the Dean's List for Academic Excellence in the Faculty of Natural Sciences. Let's find out a little about him!

Question: *Gavin, why Geology?*

Answer: I have been obsessed with it since the age of 9, when I started collecting rocks and minerals. At that time my father (who was the director of Civil Aviation Department) participated in a project that involved a great deal of blasting and subsequent exposure of rocks. At age 9, it was thrilling to collect shiny little 'rocks' (which later I learned were calcite) from the blasting. This was my first informal introduction to Geology. Mark you, I did not know what Geology even was, but I knew what a rock was! So, I have been collecting since that time.

Question: *Would you encourage other students to study Geology and why?*

Answer: Yes I would. Reason being, science teaches you a lot about life and most importantly - how to think. Since Geology is a multidisciplinary science, it will give you a lot and a bit of understanding of other science disciplines like Chemistry, Physics and Biology. It gives a broad base - so you would be a well rounded scientist. One has to have an appreciation of all the sciences to do an earth science such as Geology. To that extent, Geology is quite interesting.

To me, the most interesting thing about science is that it deals with FACTS, as opposed to the "Arts" that is some-what "ify

- ify". It's (i.e. the Arts) like staring at a white canvass - some will see just paint and others will see a polar bear in snow. These are all personal interpretations, as opposed to mere facts.

Question: *What would you like to see happen to promote Geology in Jamaica?*

Answer: Hmmmm.....
I think the best way to approach this is to try to develop interest in the younger age group (elementary school). Since science is deemed "hard", one has to try to develop an interest from an early age.

A lot of people are clueless as to the subject of Geology; unlike other subjects, Geology does not have a strong representation, for example, in high schools. Mark you, there is a little of Geology that is incorporated in Geography classes, but it does not give a full appreciation of what Geology is on its own.

Question: *What's your philosophy where (school) work is concerned?*

Answer: "Whatever is boring is forgotten." As a result, whatever I do, I try to make it interesting. One tends to be good at what he/she likes; I happen to like a lot of things because of my approach in bringing interest to it. Understand?

Question: *Were you always an "A" student?*

Answer: To be honest with you, my CXC years were extremely good, but my A'Levels in my estimation were disappointing.

Question: *Gavin, to attain such excellence, you must have a certain level of discipline. Tell us about it!*

Answer: I do not think I am extremely disciplined, but I am always aware of what is to be done and somehow I always get around to doing it. I tend to be lazy and very moody and at such times, very little work gets done.

Question: *What's life like for you on campus?*

Answer: It's hard work. I get stressed like everyone else. It's a BIG MISCONCEPTION that people who do well don't always necessarily work the hardest. This does not hold true for me; I do my share of hard work!

Question: *What was your reaction upon hearing that you were awarded the GSJ Scholarship for 1997-98?*

Answer: I am not much of a "reaction-reaction" person but actually, I was very pleased. I am not an arrogant person.

Question: *What's next for Gavin? Are there plans to continue your Geology studies?*

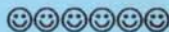
Answer: Considering that I have always been obsessed with it, I doubt I will ever discontinue it. I have put in a lot of energy into my Geology studies; to switch mid-stream would have been a total waste. That doesn't mean I will not get involved in another field along side the Geology. As for what is next, I want to do my masters, possible in Environmental Geology.

Question: *Tell us about your interests/hobbies or whatever your involvement is outside of your studies.*

Answer: Well, my hobbies are collecting rocks and minerals, fossils, meteorites and more recently, butterflies (which I must admit, my friends think is morbid!!). I don't play a lot of sports, but I enjoy watching. I also enjoy surfing the Internet. My social life is some what dismal - it involves only going to movies and "liming" with friends.

"Gavin Sets The Record Straight"

- ☺ "I am not just strictly buried in the Geology book at all times. I take time out to paint - art is one of my love - and read classic literature. There is something to learn from all of this."
- ☺ "It takes nothing out of me to help my fellow colleagues where studies are concerned. I am always more than willing to assist. In fact, lending a helping hand always strengthens my arm. Understand?"
- ☺ "A lot of persons think I'm a *Campion College* old boy; actually, I am a past student of *THE GREAT Calabar High School*."
- ☺ In most person's estimation, I am considered a bit eccentric/wacky. My response to that: people have different ways of doing things and in life (just as in Science), one must not be afraid of being a 'non-conformist'. For example - at one time every one thought/believed that the earth was flat and if no one had challenged this, we would still share this view."



THE GEOLOGICAL SOCIETY OF JAMAICA



Invites you to

our

Annual Christmas Get-together **"GEOLOSOPHY"**

Venue: *The Tree House, Hope Zoo
Premises*

Date : *Sunday, 7th December 1997*

Time: *1:00 p.m. to 5:00 p.m.*

As usual, it is a basket party and we are requesting each person to call or contact Mr. Donovan Blissett at 927-2728, Department of Geography & Geology, U.W.I. to find out what food, drink or other items to bring.

Come with the whole family, friends and games for an afternoon of fun and togetherness.



See you there!

PLEASE

REMEMBER

JANUARY 31, 1998

AGM!

Make an effort to come

ALL ARE INVITED