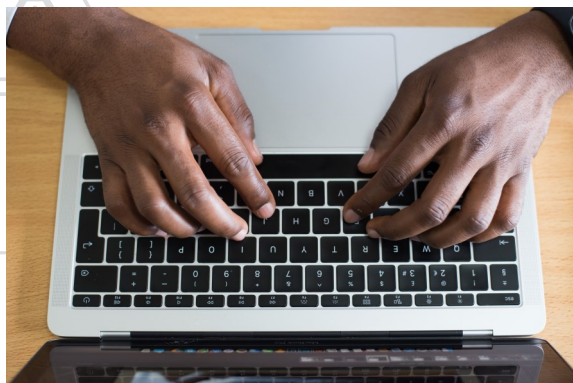


How do I apply?



Application must be completed online using the website:

<http://www.uwimona.edu.jm/postgrad/>

SUPPORTING DOCS

Applying, you will need:

1. Birth certificate
2. Degree transcript (if you are a UWI student, we will have this already)
3. Two academic referee reports (ask Graduate Studies for specific form)
4. Résumé

Time of entry

We have intake in September (Semester 1) and January (Semester 2). Call our Faculty office for the periods of application.



WHAT WE OFFER AT MONALAW

Undergraduate

Bachelor of Laws (LLB)
Minor in Law
Direct Entry

Postgraduate

Master of Laws (LLM) and Diplomas in:
Corporate and Commercial Law
Public Law
General
Intellectual Property in Creative & Cultural Industries

Master of Philosophy (MPhil)
Doctor of Philosophy (PhD)

For more info, visit:
<https://www.mona.uwi.edu/law/graduate>

MONALAW

FACULTY OF LAW · THE UWI MONA

p: 876 927 1855,
P: 876 702 4392

e: monalaw@uwimona.edu.jm

[HTTPS://MONA.UWI.EDU/LAW](https://MONA.UWI.EDU/LAW)

1-3 WEST ROAD, FACULTY OF LAW, THE UNIVERSITY OF THE WEST INDIES, MONA

FIND US ON FACEBOOK AT: UWIMONALAW
FIND US ON INSTAGRAM AT: @UWIMONALAW

WHATSAPP US AT 876 438 8594



UWI
MONA CAMPUS
JAMAICA, WEST INDIES



A UNIQUE LLM IN INTELLECTUAL PROPERTY IN CREATIVE & CULTURAL INDUSTRIES

Interested in brand management or entertainment or sports law?

MonaLaw's LLM in IP is a unique programme which will prepare you for cutting edge work in the cultural & creative industries in the Caribbean.

MONALAW

FACULTY OF LAW · THE UWI MONA



An exciting graduate programme

The programme covers both creative industries and cultural industries. Creative industries include a wide range of activities, including for example:



- music, film and television, broadcasting,
- animation, video games, graphic design,
- performing arts, drama, dance
- writing, publishing, visual arts,
- fashion, textiles, culinary arts, ...and more.

ENTRY REQUIREMENTS

This programme requires an undergraduate degree, which may be a Bachelor of Laws (LLB). If you have a degree in another area including a degree in the creative and cultural industries e.g. media and communication, journalism, fine arts, graphic design etc., then this programme is ideal for you.

COST

This programme costs US \$10,000. The UWI also has instalment plan options available.

DURATION

The full-time programme is year-long with two semesters (Sep - Dec and Jan - May) and an internship component in the summer. You will also be required to complete a research project. Lectures may be scheduled in the mornings and evenings.



Why is this LLM unique?

THE COURSES WE TEACH

- Introductory Copyright Law
- Copyright Law (The Protection of Creative Assets)
- Advanced Copyright Law
- The Management of Intellectual Property Assets
- Intellectual Property Treaties & Global Trade
- International Trade and Intellectual Property Law
- Traditional Cultural Expressions
- Industrial Property in Design & Advertising
- Sports, Entertainment & Intellectual Property
- Intellectual Property Research Project
- Creative & Cultural Industries Internship

(Please note that not all courses may be offered in each academic year.)

HOW WE TEACH

A combination of residential lectures, workshops, seminars and modern distant learning techniques with the inclusion of regional and international experts.

OUR COURSES PREPARE YOU TO ENTER FIELDS SUCH AS

- Entertainment Law
- Brand and Design Management
- Intellectual Property Asset Management
- Event Management and Coordination
- Artiste Management
- Broadcast and Media Consultation ...and many more!

STUDY VISITS IN KINGSTON, JAMAICA, A UNESCO CREATIVE CITY OF MUSIC

- Tuff Gong Recording Studios
- Jamaica Intellectual Property Office (JIPO)
- Jamaica Broadcasting Development Commission (JBDC)
- Edna Manley School for the Visual and Performing Arts
- Jamaica Copyright Office (Jamcopy)and more!

INTERNSHIPS WHICH PROVIDE EXPERIENCE IN THE FIELD

- Government agencies promoting cultural and creative industries
- Publishers
- JIPO
- Intellectual property law firms among others.



When can I start?

We have intake in September (Semester 1) and January (Semester 2). Call our Faculty office for the periods of application.