

UB



UNIVERSITY OF BRIDGEPORT

offers A New Scholarship Program for Graduate Students from \$3,000 to \$5,000 per year

(Applicants must meet minimum scholarship eligibility requirements.)

Paid Graduate Assistantships, Teaching Assistantships, Research Assistantships, and work-study positions are also available at UB.

Realize your potential *Discover* the University of Bridgeport

The University of Bridgeport could be the perfect place for you to become the person you always wanted to be. UB is located only one hour from New York City and three hours from Boston. Along with its award-winning programs, UB offers scholarships to help deserving students meet the financial obligations of pursuing higher education. Assistantships provide the opportunity to combine advanced study with practice to help you prepare for a real world career. Excellent co-op, job placement, and internships are available. Discover your potential.

UB's Interdisciplinary Graduate Degree Programs offered by the School of Engineering and the School of Business

Business Administration (M.B.A.) • Electrical Engineering (M.S.)
Mechanical Engineering (M.S.) • Bio-Medical Engineering (M.S.)
Computer Science (M.S.) • Computer Engineering (M.S.)
Technology Management (M.S.)
Computer Science and Engineering (Ph.D.)

Dual Graduate Degree Program

Earn a second degree and save significant time and money.

Do you want to know more about UB?

For more information:

Go to www.bridgeport.edu/ub/scholarship



UNIVERSITY OF BRIDGEPORT

Opening doors. Building futures.

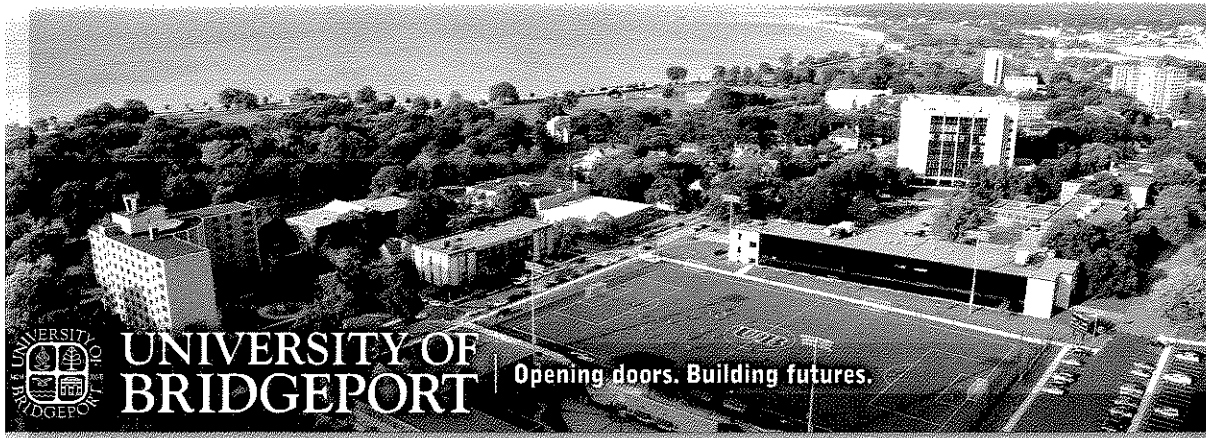
126 PARK AVENUE, BRIDGEPORT, CONNECTICUT, USA

Call: 1.800.EXCEL.UB • E-mail: admit@bridgeport.edu

Career Opportunities for International Graduate Students

- Upon graduation, all International Students are eligible to obtain work experience in the USA for 12 to 29 months
- STEM (Science, Technology, Engineering, Mathematics) Designated Degree Program graduates can obtain work experience for up to 29 months in USA
- Excellent co-op, job placement, and internships available



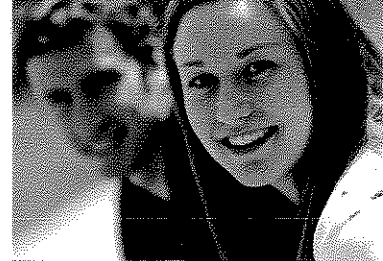


University of Bridgeport
 Office of Graduate Admissions:
 126 Park Avenue
 Bridgeport, CT 06604

Telephone: 203.576.4551
 Toll-Free: 800.EXCEL.UB
 Fax: 203.576.4941
 E-mail: admit@bridgeport.edu
www.bridgeport.edu

603405_FLY_02_2010_19.000

UB GRADUATE FACTSHEET



Keyfacts

Setting: Located within a major urban area

Number of undergraduate students: 2,000

Number of graduate students: 3,300

School colors:

Student-faculty ratio: 15:1

Admissions office:

Phone: 203.576.4551

E-mail: admit@bridgeport.edu

Cost of attendance:

Graduate tuition + fees (academic year): \$13,630

Typical room and board charge (academic year): \$12,000

Financial aid:

Grants offered: Yes

Scholarships offered: Yes

Loans offered: Yes

Graduate Assistantships: Yes

Employers of Recent Graduates:

Apple

Citibank

General Electric

Merrill Lynch

Norwalk Public Schools

Sikorsky Aircraft Corporation

UBS

United Nations

U.S. Department of State

and more...

Overview

The University of Bridgeport offers career-oriented graduate and professional degrees and programs for people seeking personal and professional growth. The University promotes academic excellence, personal responsibility, and commitment to service. Distinctive curricula in culturally diverse supportive learning environment prepare graduates for life and leadership in an increasingly interconnected world. The University is independent and non-sectarian.

Accreditation

- The University of Bridgeport is accredited by the New England Association of Schools and Colleges and the Board of Governors of the Connecticut Department of Higher Education.
- The School of Business is accredited by the Association of College Business Schools and Programs.
- All professional and teacher-training programs in Education are accredited by the Connecticut State Department of Education.

Academics/Programs

- Doctorate program offered in computer science and engineering.
- Master of Science degrees are available with specializations in computer science and computer engineering, mechanical, electrical, bio-medical engineering, and technology management.
- Master of Business Administration degrees are available with concentrations in Accounting, Finance, Information Systems and Knowledge Management, International Business, Marketing, Management, Global Financial Services, etc.
- Master of Science in Education degrees offered with concentrations in Elementary, Middle and Secondary Education. Programs lead to certification in the state of Connecticut.
- Master of Science in Counseling degrees are offered with concentrations in Community Counseling, College Student Personnel, Human Resource Development and Human Services.
- Master of Arts degree is available in Global Development and Peace.

Tuition Assistance

- Graduate Scholarship Program awards are \$3,000 to \$5,000 per year for graduate students.
- Scholarship awards are based on grades and standardized test scores.
- All qualified applicants are automatically considered for a scholarship.
- Graduate, teaching and research assistantships, and work study are also available for qualified graduate students.

Location

- The University of Bridgeport is located in Fairfield County, which is known as the "Corporate Gold Coast" due to the large number of Fortune 500 companies in the area.
- Located on the East Coast of the United States, which facilitates wonderful internship and job opportunities.
- Convenient public transportation allows for easy access to the major cities of New York, Hartford, and Boston.
- The beautiful seaside campus allows for the enjoyment of sun and recreation.



GRADUATE (MASTER'S AND DOCTORATE)

SCHOOL OF BUSINESS

Business Administration (M.B.A.)

- Accounting
- Finance
- General Business
- Global Financial Services
- Human Resources Management
- Information Systems and Knowledge Management
- International Business
- Management
- Marketing
- Operations
- Small Business and Entrepreneurship
- Specialized Business Program

SCHOOL OF EDUCATION AND HUMAN RESOURCES

Counseling and Human Resources (M.S.)

- Community Counseling
- College Student Personnel
- Human Resource Development
- Human Services

Counseling—Certificate of Advanced Graduate Study (CAS)

Education (M.S.)(Non-Certification)

- General Education
- Reading and Language Arts
- Education MOD MAP

Education (M.S.) Teacher Certification

- Elementary (K-6)
including the Elementary Daytime Program
- Middle (4-8)
English Math Physics Biology Chemistry
Earth Science General Science History & Social Studies
- Secondary (7-12)
Business English Mathematics Physics Biology Chemistry
Earth Science General Science History & Social Studies
- Music (K-12)
- Remedial Reading and Language Arts (1-12) including Reading Consultant

Instructional Technology (M.S.)

- Teacher Track
- Development Track
- Trainer Track

Education (Sixth Year Certification of Advanced Studies)—Professional Program for certified teachers or teaching practitioner

- Education MOD MAP
- Secondary Education
- Elementary Education
- Educational Administration and Supervision including the 092 Program
- Remedial Reading and Language Arts including Reading Consultant

Doctoral Program: Educational Leadership (Ed.D.)

ENGLISH LANGUAGE INSTITUTE
Year-round intensive ESL Program

SCHOOL OF ENGINEERING

Electrical Engineering (M.S.)

Certificates/Concentrations Available in:

- Bio-Medical Engineering
- Computer Communications and Networking
- Environmental and Energy Management
- Microelectronics and Computer Architecture
- Robotics and Automation
- Signal and Image Processing
- Very Large Scale Integration (VLSI)
- Wireless and Mobile Communications

Mechanical Engineering (M.S.)

Certificates/Concentrations Available in:

- CAD/CAM
- Intellectual Property Management
- Manufacturing Management
- Supply Chain Management
- Robotics and Automation

Bio-Medical Engineering (M.S.)

Certificates/Concentrations Available in:

- Bioelectronics
- Biomaterials
- Biomechanics
- Biomedical Instruments
- Birobotics
- Biosensing
- Gene Sequencing
- Physiological Measurements
- Tissue Engineering

Computer Science (M.S.) (Online option—M.S.)

Certificates/Concentrations Available in:

- Advanced Applications and Systems Programming
- Bio-Medical Engineering
- CAD/CAM
- Computer and Information Security
- Computer Communications and Networking
- E-Commerce
- Microelectronics and Computer Architecture
- Modern Data Base Systems
- Robotics and Automation
- Signal and Image Processing
- Software Engineering
- Very Large Scale Integration (VLSI)
- Wireless and Mobile Communications

Computer Engineering (M.S.)

Certificates/Concentrations Available in:

- Advanced Applications and Systems Programming
- Bio-Medical Engineering
- CAD/CAM
- Computer and Information Security
- Computer Communications and Networking
- E-Commerce
- Microelectronics and Computer Architecture
- Modern Data Base Systems
- Robotics and Automation
- Signal and Image Processing
- Software Engineering
- Very Large Scale Integration (VLSI)
- Wireless and Mobile Communications

DUAL M.S. DEGREES AVAILABLE

- Computer Science / Computer Engineering
- Computer Science / Electrical Engineering
- Computer Science / Mechanical Engineering
- Computer Science / Bio-Medical Engineering
- Computer Science / M.B.A.
- Computer Science / Technology Management
- Computer Engineering / Electrical Engineering
- Computer Engineering / Mechanical Engineering
- Computer Engineering / Bio-Medical Engineering
- Computer Engineering / M.B.A.
- Computer Engineering / Technology Management
- Electrical Engineering / Mechanical Engineering
- Electrical Engineering / Bio-Medical Engineering
- Electrical Engineering / M.B.A.
- Electrical Engineering / Technology Management
- Mechanical Engineering / Bio-Medical Engineering
- Mechanical Engineering / M.B.A.
- Mechanical Engineering / Technology Management
- Bio-Medical Engineering / M.B.A.
- Bio-Medical Engineering / Technology Management
- Technology Management / M.B.A.

Technology Management (M.S.) (Online option—M.S.)

Certificates/Concentrations Available in:

- Bio-Tech Management
- Corporate, Government and Information Security & Continuity Management
- Computer and Information Security
- Computer Communications and Networking
- E-Commerce
- Entrepreneurship and Intrapreneurship
- Environmental and Energy Management
- Marketing
- Global Program and Project Management
- Information Technology Management
- Intellectual Property Management
- Management
- Manufacturing Management
- Modern Data Base Systems
- New Product Development and Management
- Service Management and Engineering
- Software Engineering
- Strategic Sourcing and Vendor Management
- Supply Chain Management
- Robotics and Automation
- Wireless and Mobile Communications

Computer Science and Engineering (Ph.D.)

INTERNATIONAL COLLEGE

Global Development and Peace (M.A.)

- International Political Economy and Development
- Conflict Analysis and Resolution
- Global Management

DIVISION OF HEALTH SCIENCES

ACUPUNCTURE INSTITUTE

Acupuncture (M.S.)

COLLEGE OF CHIROPRACTIC

Chiropractic (D.C.)

FONES, SCHOOL OF DENTAL HYGIENE

Dental Hygiene (M.S.) (Online option—M.S.)

- Dental Hygiene Administration/Management
- Dental Hygiene Education
- Dental Public Health
- Dental Hygiene Practice

COLLEGE OF NATUROPATHIC MEDICINE

Naturopathic Medicine (N.D.)

NUTRITION INSTITUTE

Human Nutrition (M.S.) (Online option—M.S.)

PHYSICIAN ASSISTANT INSTITUTE

Physician Assistant (M.S.)

KEY:

M.A.	Master of Arts (approx. two-year graduate program on a full-time basis)
M.S.	Master of Science (one to three-year graduate program)
M.B.A.	Master of Business Administration (approx. two-year graduate program on a full-time basis)
6th Year	(approx. one year beyond the master's degree/education major)
Ed.D.	Doctorate in Education
D.C.	Doctor of Chiropractic
N.D.	Doctor of Naturopathic Medicine
Ph.D.	Doctor of Philosophy