



increasing access



A. Online and Distance Education Programmes

B. Student Profile



increasing access

As the Campus continues its thrust towards making tertiary education available to all by surmounting the traditionally limiting factor of geography and the attendant higher financial costs, the 2001/2002 academic year saw even greater efforts aimed at increasing student access.

A. Online and Distance Education Programmes

The UWI through its online offerings, distance education centres and in collaboration with other institutions enrolled a total of 2,324 students in its Off-Campus programmes during the 2001/2002 academic year. This number represents an increase of 11% over 2000/2001 and 16% over 1999/2000 academic years. Of the 2,324 Off-Campus students, 1,522 or 40% over the last academic year, were enrolled in degree programmes offered online, through the UWI Distance Education Centres and also through new and existing collaborations with disparate affiliate and tertiary level institutions.

A total of 1,338 Off-Campus students enrolled in first degree programmes and 184 in postgraduate programmes. The remaining 802 Off-Campus students enrolled in certificate and diploma programmes. Appendix 4 shows the full distribution Off-Campus programmes by institution/centre.

In the Faculty of Humanities and Education, one of the more significant developments during the year was the signing and commencement of a ten-year contract with the Ministry of Education and Culture to produce and deliver a B.Ed Degree by distance and summer modes to approximately 3,000 secondary school teachers in ten disciplines. This project has the potential to transform the delivery methods for the University's other degree programmes and thereby place it in a more competitive position to cater to the educational needs of the nation and region.

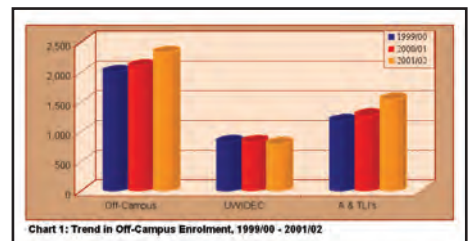
Arrangements have been concluded with the Jamaica Constabulary Staff College, the training arm of the Jamaica Constabulary Force to offer the Certificate in Public Administration (CPA-Special),

designed for the Police Force, commencing in 2002/2003. The programme will initially be offered on a part-time basis over two years.

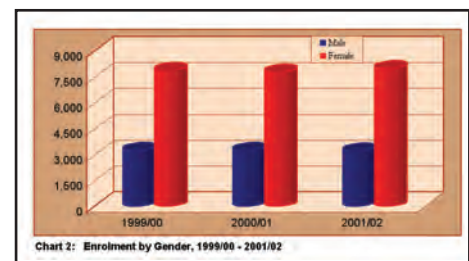
The Management Institute for National Development MIND commenced offering Level I of the Bachelors Degree in Public Administration and total enrolment in the 2001/2002 academic year was fifty-nine. A constraining factor in this programme is the number of on-campus students that Mona can accommodate in Level II. MIND has also expressed an interest in offering Level II of the programme. However, a constraining factor is the degree of oversight that would be required of the Campus.

B. Student Profile

As shown in Table 1, total student enrolment in the 2001/2002 academic year stood at 11,180 which represented a marginal 1% increase over the period 1999/2000 - 2001/2002. Of this total, 8,856 were on-campus students with 61% attending classes on a full-time basis and 39%, on a part-time basis. The remaining 2,324 were off-campus, that is, registered in distance education programmes and at tertiary level institutions.



The gender balance of the total student population continued to be tipped in favour of the females with 29% male and 71%, female. The majority of the students, that is, 93%, were Jamaican and 6% from other contributing countries.





increasing
access

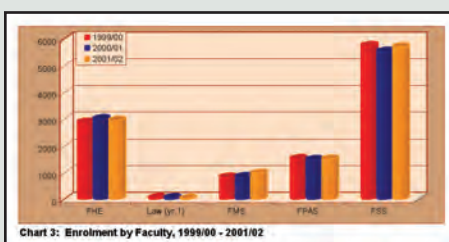
Table 1: Student Enrolment at the Mona Campus

	1999/2000	2000/01	2001/02
Total Student Body	11,074	10,951	11,180
- Males	3,211 (29%)	3,198 (29%)	3,190 (28.5%)
- Females	7,863 (71%)	7,753 (71%)	7,990 (71.5%)
Jamaicans	10,170 (91.8%)	10,182 (93.0%)	10,442 (93.4%)
Other contributing territories	760 (7%)	644 (5.9%)	635 (5.7%)
Guyana & Turks & Caicos	34 (0.3%)	37 (0.3%)	29 (0.2%)
Other Countries	110 (0.9%)	88 (0.8%)	74 (0.7%)
Total On-Campus Students	9,073	8,854	8,856
- Full-time	5,804 (64%)	5,585 (63%)	5,419 (61%)
- Part-time	3,269 (36%)	3,269 (37%)	3,437 (39%)
Total Off-Campus	2,001	2,097	2,324
- Distance/Challenge	821	827	790
- Tertiary Level Institutions	1,180	1,270	1,535

Table 2 shows that the Social Sciences faculty continued to be the largest faculty, with 5,709 students which represented 50% of total student enrolment. The second largest faculty was that of the Humanities and Education with 2,946 students accounting for a quarter of total enrolment.

Table 2: Enrolment by Faculty, 1999/00 - 2001/02

Faculty	ENROLMENT		
	1999/2000	2000/01	2001/02
Humanities & Education	2,883	3,005	2,946
- Humanities	(1,868)	(1,996)	(1,928)
- Education	(1,015)	(1,009)	(1,018)
Law (yr. 1)	54	56	29
Medical Sciences	341	352	976
Pure & Applied Sciences	1,529	1,495	1,520
Social Sciences	5,767	5,543	5,709
Total	11,074	10,951	11,180





increasing
access

With 71% of students (that is, 8,022) pursuing first degrees, the tradition of the strong dominance of undergraduate programmes continued for yet another year. Nonetheless, the campus approached the target of achieving 20% of total enrolment in postgraduate programmes as 2,105 students were enrolled in higher degree programmes (see Table 3).

As is the case with most universities, there is a young student body with almost half of the students being under the age of 25 years. The campus, however, is aware that it needs to tailor its academic programmes to suit the needs of the working group, as an equal proportion of students are in the prime working age range of 25-50 years, as shown in Chart 5.

Table 3: Total Enrolment by Programme, 1999/00 - 2001/02

Programmes	Enrolment		
	1999/2000	2000/01	2001/02
First Degree	7,720	7,847	8,022
Certificate	1,117	978	821
Diploma	130	123	33
Higher Degree	2,006 (18% of total)	1,907 (17% of total)	2,105 (19% of total)
Advanced Diploma	-	-	47
Specially Admitted	101	96	152
Total	11,074	10,951	11,180

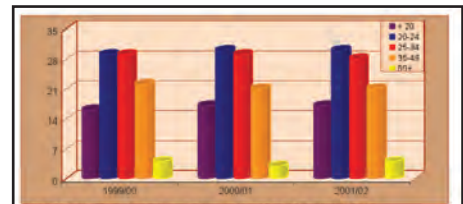


Chart 5: Percentage Distribution of Students by Age 1999/00 - 2001/02

Freshers

That half of the Freshers are under the age of 20 years, justifies the significant work of the Office of Student Services in developing programmes that prepare and integrate them into university life in a seamless manner.

The campus' decision to intensify recruitment efforts at the high schools from as early as the third form level is borne out by the fact that half of the Freshers come to the university straight out of high school.

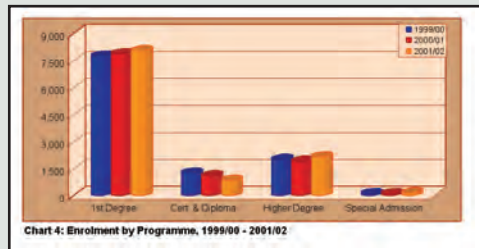


Chart 4: Enrolment by Programme, 1999/00 - 2001/02



Freshers attending orientation session

Table 4: Age distribution of Freshers

Age	Freshers			
	2000/01		2001/02	
	Number	%	Number	%
<20	918	50	963	50
20-24	409	22	415	22
25-34	319	17	332	17
35-49	183	10	184	10
50+	13	1	13	1
TOTAL	1841	100	1906	100



increasing
access



Freshers in the colours of their various Halls of Residence

Table5: Freshers by last type of educational institution attended

Institution	Percentage	
	2000/01	2001/02
High School	49	50
Teachers' College	17	15
Community College	19	22
Other Tertiary Institution	9	9
UTECH	3	2
Other Universities	3	2
TOTAL	100	100



increasing access

In most of the faculties, the majority of university entrants possess normal level matriculation qualifications, that is, a minimum of two advanced subjects (CAPE/British 'A' Levels or six CAPE units). In the Medical Science and Pure and Applied Science faculties, more than a third of the entrants have lower level qualifications. In the case of the latter, most of these students are enrolled in the preliminary science programmes which serve as a bridge between the high school and university levels.

Table 6: Freshers by Matriculation Qualifications

Faculty	Proportion of Students (%)					
	2000/01			2001/02		
	Normal Level	Lower Level	All Levels	Normal Level	Lower Level	All Levels
Hum. & Educ						
- Hum.	83	17	100	77	23	100
- Education	99	1	100	99	1	100
Law	100	0	100	100	0	100
Medical Sciences	67	33	100	95	5	100
Pure & Applied Sciences	58	42	100	71	29	100
Social Sciences	89	11	100	80	20	100
TOTAL	82	18	100	80	20	100

Normal Level – 5 subjects of which at least 2 must be GCE Advanced Level or CAPE 2-units.

Lower Level – CXC Mathematics, English Language, and 3 other approved subjects.

Medical Sciences – Lower Level – relates to persons doing Certificates and Diplomas e.g. Nurses.



38. New students at the Matriculation Ceremony for the 2001/2002 academic year



increasing access

Measurable output

There were a total of 2,556 persons graduating from the Mona Campus in 2002 which represented a 12% decrease over the period, 1999/2000 - 2001/2002. There was a significant increase in the number of persons (from 111 in 2001 to 170 in 2002 or 53%) graduating with first class honours compared with the previous year. The proportion of graduates with first degrees also increased over the 3-year period under review. Based on a review of the table below, the fall in the numbers of graduates with certificates, diplomas and higher degrees was mainly responsible for the overall decrease. Although less than 20% of the graduates were from on- and off-campus certificate and diploma programmes, their numbers fell by 33% over the three years. To a lesser extent, the number of graduates with higher degrees also fell some 23%.

Graduation

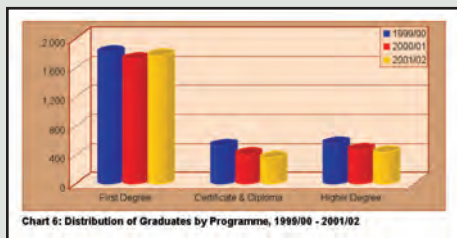
As is now customary, two days in the month of November were dedicated to the graduation ceremonies in which the Mona Campus recognises its graduates.

Among the graduates this year was Mr. Daemion Ricardo McLean, a visually impaired student from the Faculty of Social Sciences. He was awarded a Bachelor of Science degree in Social Work.

Dr. Shanique Palmer, Faculty of Medical Sciences and Mr. Keron Morris, Faculty of Humanities and Education delivered this year's Valedictory addresses. In her address, Dr. Palmer noted that "the UWI has not only been an institution for the acquisition of academic knowledge, it has also been an experience that has transformed us", while Mr. Morris reminded fellow graduates that "to be a survivor, it takes stamina, strength, dedication and drive".

Total Graduates by Programme

PROGRAMME	GRADUATES		
	1999/2000	2000/2001	2001/2002
<i>First Degree</i>	1,809	1,714	1,765
<i>Certificate and Diploma</i>	523	404	359
<i>Higher Degree</i>	555	468	432
TOTAL	2887	2586	2556



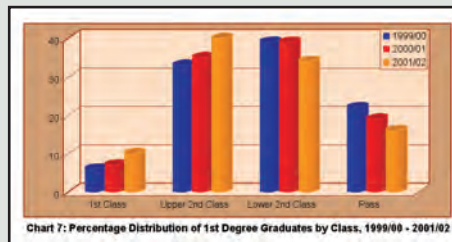
Graduates at the 2002 Graduation Ceremony



increasing access

Level of First Degrees Awarded

LEVEL	PERCENTAGE		
	1999/2000	2000/2001	2001/2002
<i>First Class Honours/Distinction</i>	6	7	10
<i>Upper Second Class Honours</i>	33	35	40
<i>Lower Second Class Honours</i>	39	39	34
<i>Pass</i>	22	19	16
TOTAL	100	100	100



*Dr. Shanique Palmer,
Valedictorian*



*Mr. Keron Morris,
Valedictorian*

Five distinguished persons, Ambassador Don Mills, Professor Ted Chamberlin, Emerita Professor Sylvia Wynter, Mr. Kenneth Ingram and Mr. Ernest Ranglin, were awarded honorary degrees from the Mona Campus at the 2002 Graduation Ceremonies. Ambassador Mills received the honorary Doctor of Laws, while the remaining four awardees were conferred the honorary Doctor of Letters degrees.

Ambassador Mills served as Ambassador and Permanent Representative to the United Nations and has been described as

a Public Servant par excellence. He also served the UWI with distinction as Registrar, Research Fellow, Part-time Lecturer and is now an Honorary Professor attached to the UWI Centre for Environment and Development (UWICED) at the Mona Campus.

Professor Ted Chamberlin, a Canadian national, is Senior Professor and past Principal of New College at the University of Toronto and is regarded as one of North America's pre-eminent authorities on



increasing
access

literature of the Caribbean, while Professor Wynter has made a distinguished contribution to the Caribbean intellectual tradition as a writer, cultural theorist and scholar.

Mr. Ingram served as University Librarian at the Mona Campus. His remarkable lifetime work identifies the source materials on which current and subsequent generations of historians of the West Indies can build, while Mr. Ernie Ranglin, a Jamaican national, was central to the creation of popular Jamaican music such as Ska and Reggae and has been consistently rated amongst the top three guitarists in the world over the past thirty years.

(l-r) Mr. Ernest Ranglin, Mr. Kenneth Ingram and Professor Ted Chamberlin after receiving their awards at the 2002 Graduation Ceremonies



Ambassador Don Mills (right) receiving his award from the Hon. Sir Shridath Ramphal, Chancellor, UWI



Professor Sylvia Wynter receiving her award from the Hon. Sir Shridath Ramphal, Chancellor, UWI